



DS3000 Offline X Ray Counter Machine 800W AC 220V Offline Inspection

Our Product Introduction

for more products please visit us on bgaxraymachine.com

Basic Information

- Place of Origin: CHINA
- Brand Name: WDS
- Certification: CE
- Model Number: DS3000
- Minimum Order Quantity: 1 UNIT
- Packaging Details: Wooden case
- Delivery Time: 8-15 working days
- Payment Terms: T/T, Western Union, MoneyGram
- Supply Ability: 50 UNITS PER MONTH



Product Specification

- Power Consumption: 800W
- Detector Size: 470*470*35mm
- Power Supply: AC 220V/50-60Hz
- Application: Offline Inspection
- Detector Type: Amorphous Silicon
- X-Ray Tube Voltage: 80kV
- Type: X-ray Counter
- X-Ray Tube Current: 100-800uA
- Inspection Speed: 4-8S
- Model: S-3000
- Highlight: DS3000 X Ray Counter Machine,
AC 220V X Ray Counter Machine,
AC 220V Xray Parts Counter



More Images



Product Description

1. High detection accuracy:

Based on the AI intelligent recognition algorithm, the detection accuracy is excellent. The calculation accuracy of conventional devices reaches more than 99.99%. It uses high-definition cameras and self-developed intelligent algorithms to achieve high code scanning recognition rate.

2. Strong detection adaptability:

Suitable for various types of chip components, SMD devices; high product compatibility, can quickly and accurately detect materials such as 7-15-inch trays (can be upgraded to 17-inch YJedec Tray/IC moisture-sensitive packages; material label error-proofing mechanism, Material tray induction recognition, real-time docking with the printer, pick up any tray of materials and print the tray material information.

3. The detection is easy to use:

Automatic statistical output of ordering data supports docking with ERP, MES and NMS systems; the design is based on ergonomic mechanics and can be operated in a sitting position. The monitor is kept at the same height as the human eye, protecting the cervical spine, occupying a small space and reducing working space; the software operation is user-friendly, Guided menu structure makes it easy for employees to operate.

4. High detection efficiency:

The detection speed is 8-10 seconds/single plate, which is highly efficient and can save multiple labors, truly reducing manpower and increasing efficiency.

5. Equipment related qualifications:

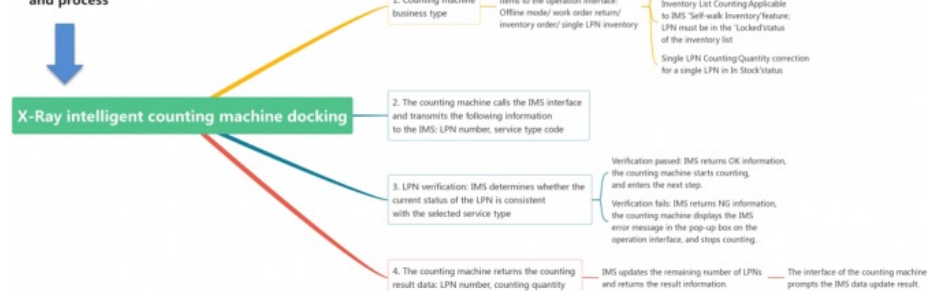
This product has obtained an exemption certificate, and radiation safety is guaranteed. At the same time, users can be exempted from occupational health examinations for operators, participation in the "Radiation Safety and Protection Assessment of Nuclear Technology Utilization" certification and employment, and equipment placement in specific areas.



Usage requirements and application scenarios

1. After the X-ray intelligent counting machine completes direct counting, the result data of the counting will be uploaded to the digital control system for update.
2. Main application scenarios: ①Work order return; ②Single LPN inventory; ③ Initial inventory / Re-inventory.

Docking plan and process



WISDOMSHOW

P/N: 803414260 QTY: 48 PCS
 RID: SLN220718000032
 D/C: 2228 L/N: 2228
 Vendor: 苏州 科技有限公司
 Name: XLKRNT4850C2D1-A
 Desc: 500*352*89mm, ADC12/A380.

SUPLET QR code content

V1016&2228&2228&803414260
 &48&2022710&SLN220718000032&M00773

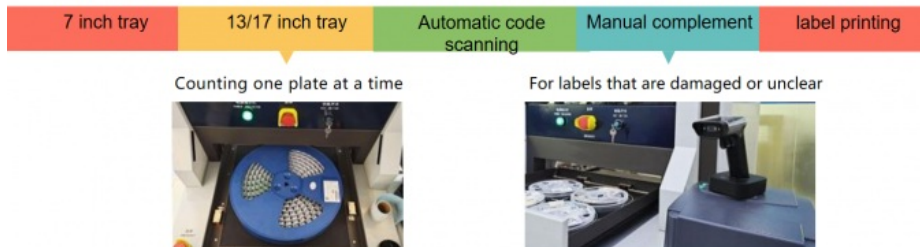
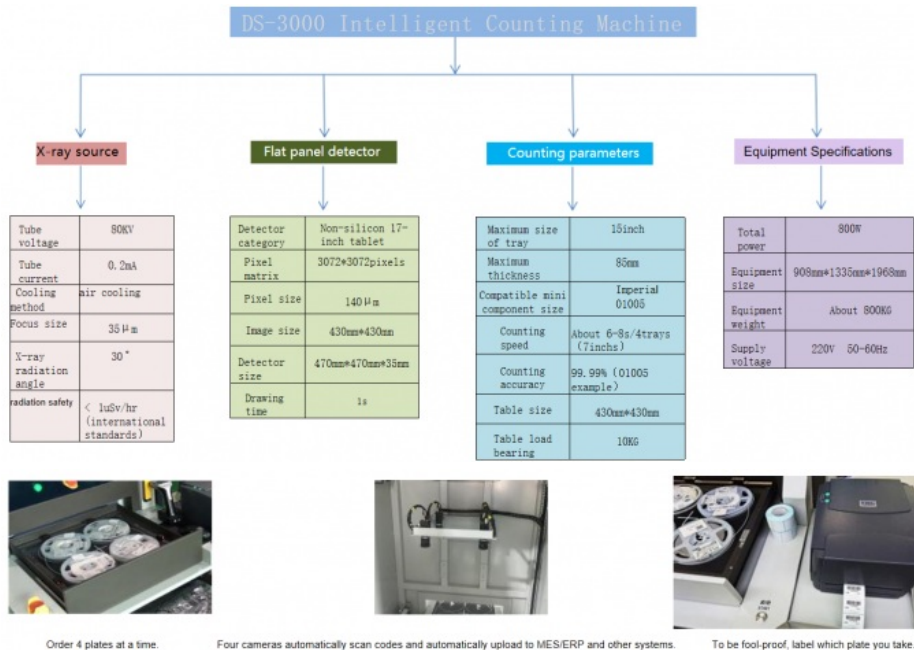
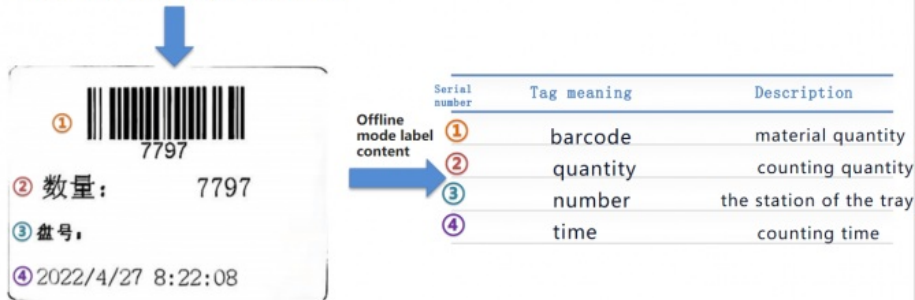
line number	field name	Field type	paragraph separator
①	Supplier Code	character	&
②	D/C	character	&
③	Production Batch	character	&
④	Material Code	character	&
⑤	Reel ID Count	character	&
⑥	Production Date	character	&
⑦	Reel ID	character	&
⑧	Manufacturer Code	character	&

Analysis details

1. The equipment can be used without connecting to the digital control system to achieve direct counting in offline mode.

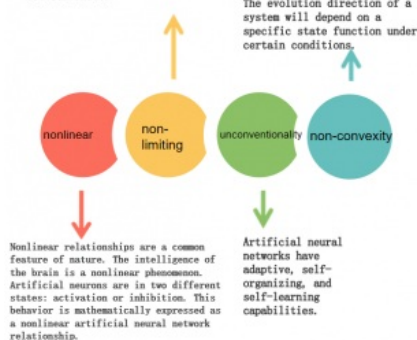
2. Offline mode can realize fully automatic counting, automatic label printing, and automatic generation of point reports.

Offline mode label printing rules



1. Software Neuron Algorithm

A neural network is usually composed of multiple neurons that are widely connected. The overall behavior of a system not only depends on the characteristics of a single neuron, but may also be mainly determined by the interactions and interconnections between units.

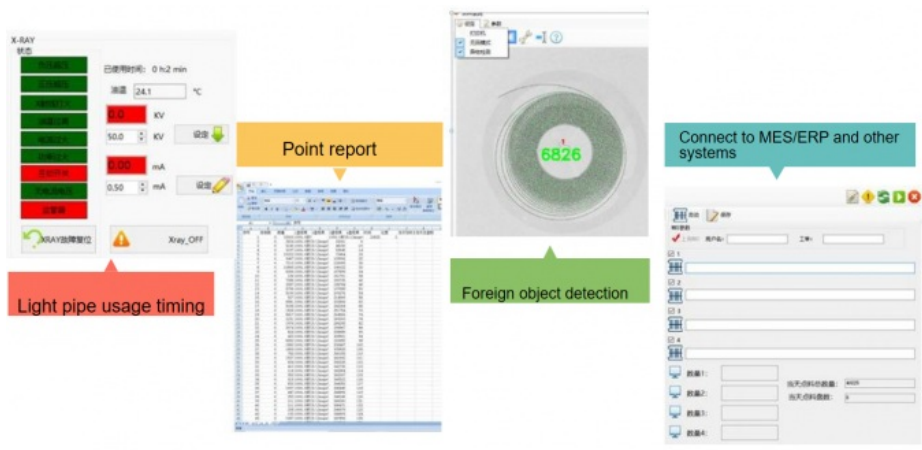


2. Artificial Intelligence Deep Learning Algorithm

1. The ordering software adopts artificial intelligence deep learning algorithm.
 2. There is no need to bind components and algorithms.
 3. Instead, use AI to automatically identify components and automatically apply algorithms.
 4. The algorithm can learn the clicked component data.
- like:
- ① Length-to-width ratio;
 - ② The angle of each corner of the component;
 - ③ The slope from inside to outside components;
 - ④ The deformation rules of component images from inside to outside, etc.
- As components are counted more and more times, the results of counting materials become more and more accurate.
- When encountering similar components and larger material trays, we can easily handle them.

3. Intelligent database

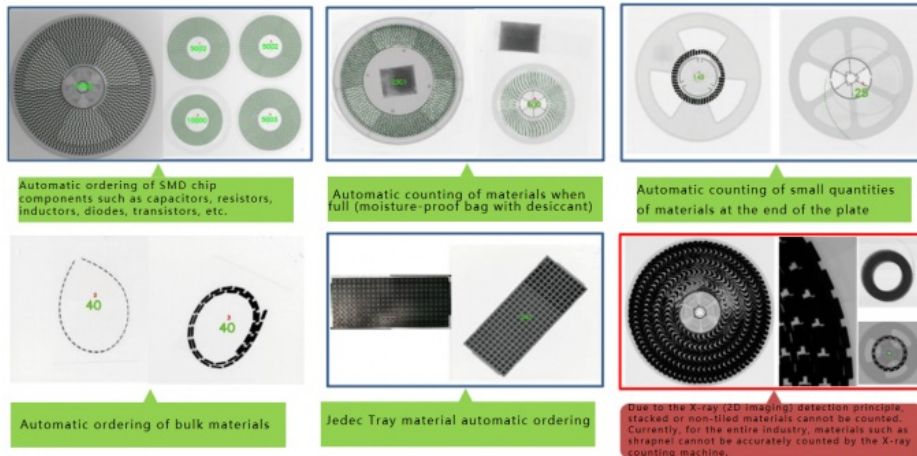
1. The equipment software adopts machine automatic learning algorithm.
2. Analyze a large number of data records and automatically update and tune them to the database.
3. Over time, the accuracy of equipment ordering will become closer and closer to 100%.
4. The coverage of component types will also become wider and wider.



3-3 Speed and accuracy

1. The X-RAY intelligent counting machine can cooperate with SMT tail material counting and improve intelligent warehousing.
2. It can count four trays of materials at the same time, and it only takes 8S at the fastest. A single device can save 5-7 people in labor.
3. Make tailings counting and material warehousing more efficient, more secure, and more digitally managed;
4. For unconventional materials that cannot be accurately identified, model algorithm optimization updates will be provided, and optimization can be completed within 24 hours.
5. Up to now, the ordering time and accuracy of materials of various sizes are as follows:

Name	Material Dimensions	Accuracy	Name	Material Dimensions	Accuracy	Name	Material Dimensions	Accuracy	Name	Material Dimensions	Accuracy
Resistor	01005	99.95%	Capacitor	01005	99.99%	Inductor	CD32	99.99%	MOS	2N7000	100.00%
	0201	99.99%		0201	99.99%		CD43	99.99%		2N7002	100.00%
	0402	100.00%		0402	100.00%		CD52	100.00%		2N7004	100.00%
	0603	100.00%		0603	100.00%		CD54	100.00%		BGA	100.00%
	0805	100.00%		0805	100.00%		CD73	100.00%	IC	QFN	100.00%
	1206	100.00%		1206	100.00%		CD75	100.00%		QFP	100.00%
	1210	99.99%		1210	100.00%		CD104	100.00%		4025B	100.00%
	1812	99.99%		1608	100.00%		CD105	100.00%	Crystal Oscillator	2016B	100.00%
	2010	99.99%		2125	100.00%		M1	100.00%		1612B	99.99%
	2512	99.99%		3612	100.00%		M2	100.00%		HC-49	99.99%
Tantalum Capacitor	TANT 4525	100.00%	Transistor	SOT 23	100.00%	Diode	M4	100.00%	Optocoupler		99.99%
	TANT 6640	100.00%		SOT 89	100.00%		M5	100.00%		Switch	99.99%
	TATN 7343	100.00%		SOT 363	100.00%		4148	100.00%	Terminal Block	TATN 7343	100.00%



Shenzhen Wisdomshow Technology Co.,Ltd

+86 17727914291

Mia@wdsbga.cn

bgaxraymachine.com

No.6,Haosi Western Industry,Shangjing Town,Bao'an District,Shenzhen,China