



S7000 X-ray Inspection Machine with High Definition Flat Panel Detector and Japanese Hamamatsu X-ray Tube for PCBA Detection

Basic Information

- Place of Origin: Guangdong, China
- Brand Name: WISDOMSHOW
- Model Number: S7000
- Minimum Order Quantity: 1
- Price: CN¥207,612

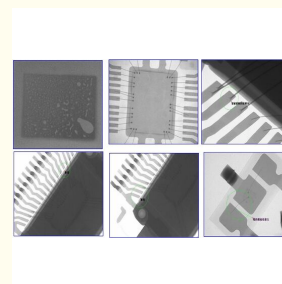
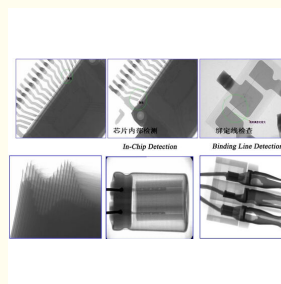
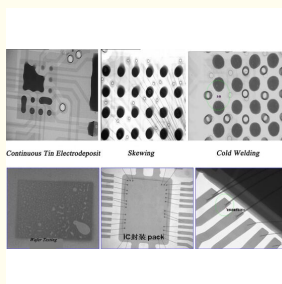


Product Specification

- Weight: 820 KG
- Tube Voltage: 90kv / 100kv For Option
- Tube Current: 10-200 μ A
- Detector Category: HD
- Light Tube: Closed Tube
- Pixel Matrix: 1536*1539 PIXELS
- Supply Voltage: 110-220v
- Tube Power: 8W
- Focus Size: 5 μ m
- Geometric Magnification: Geometry 150 Times, System 1000 Times
- Image Frame Rate: 20fps
- Pixel Pitch: 85 μ m
- Load-bearing Platform: 10KG
- Detectable Size: 350*300mm
- Total Power: 1400W



More Images



Product Description

S7000 / 7200 SMD Inspection Machine X-ray PCBA Detection Equipment

S-7000 x-ray detection equipment with high definition flat panel detectors for LED and semiconductor package inspection.

JUST BUY IT!



Product Overview



S-7000 is a small micro-focus X-ray inspection equipment, a high-performance, cost-effective inspection system composed of Japanese Hamamatsu micro-focus X-ray tubes and high-definition flat-panel detectors.

Core Advantage

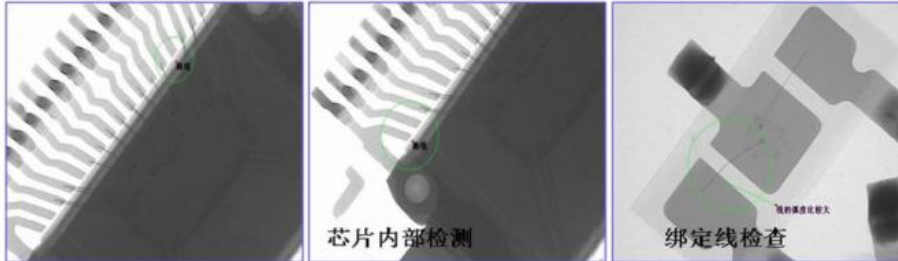


The two main components of X-RAY are: X-ray source and detector. The X-ray source is Japanese HAMAMATSU, and the detector is an Iray ultra-high-definition digital flat-panel detector.

HAMAMATSU X-ray Source

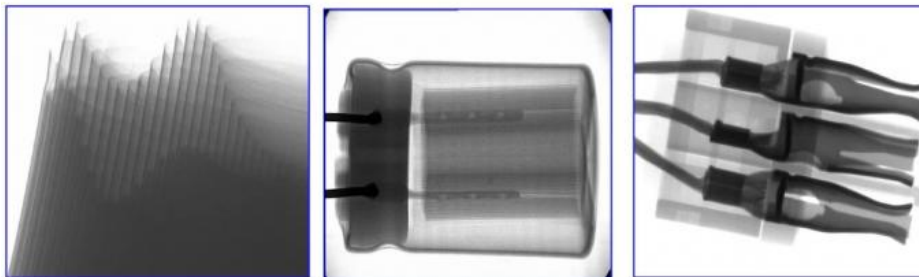
Hamamatsu Photonics Co., Ltd., established in 1953, is an optical science and optical industry company with the highest level of technology and the largest market share in the world. HAMAMATSU's X-ray source is currently the world's longest life, best stability, best imaging effect, and the service life can reach 12-15 years.

IRAY Flat Panel Detector



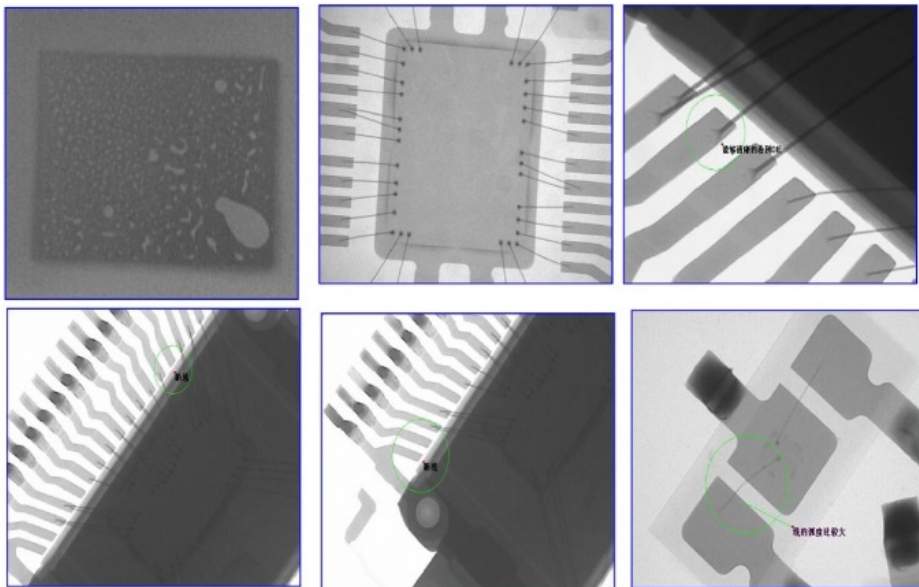
In-Chip Detection

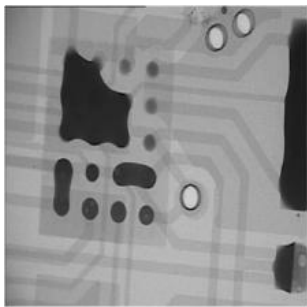
Binding Line Detection



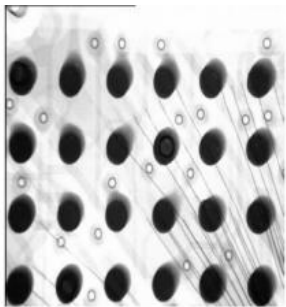
Iray's headquarters is located in the Zhangjiang East District Medical Device Park, Pudong, Shanghai. It focuses on the development and production of amorphous silicon flat panel detectors, a key component of medical imaging equipment. The designed product life can reach 15-20 years.

Product Features

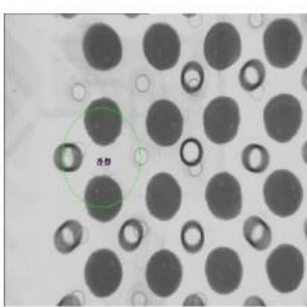




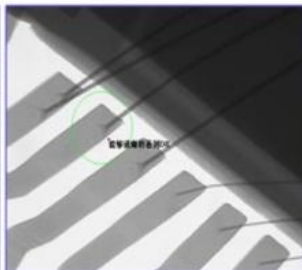
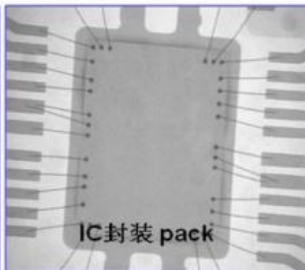
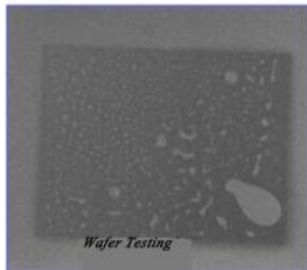
Continuous Tin Electrodeposit



Skewing



Cold Welding



Suitable for electronics manufacturing, semiconductors, microwave devices, LEDs, connectors, etc.

High-definition detection images for detecting product misalignment, continuous tin, virtual solder, air bubbles, etc.

Using Hamamatsu 90 KV 15 μ m light tube, maintenance-free and long life

With CNC function for automatic detection and judgment of NG, PASS, OR

Digital high-definition flat panel detector

4-axis linkage control system

Product Parameters

Parameter	Specification
Model	S-7000
X-ray Source	Sealed micro-focus ray source
Tube Voltage	90KV
Tube Current	10-200 μ A
Tube Power	8W
Focus Size	5 μ m
Geometric Magnification	Geometry 150 times, system 1000 times
Cooling Method	Air-cooled
Detector Type	Digital HD flat plate detector
Pixel Matrix	1536*1536 pixels
Image Frame Rate	20fps
Pixel Pitch	85 μ m
Computer	DELL Windows10
Load-bearing Platform	10KG
Detectable Size	350*300mm
Total Power	1400W

Equipment Size	930*930*1750mm
Equipment Weight	About 800KG
Supply Voltage	110-220V 50-60Hz

部分合作客户



Certifications & Qualifications

Qualification



Organization Code Certificate



Packing & Shipping

- Standard Export Wooden cases
- Delivery in 2 workdays after payment confirmation
- Shipping by TNT, DHL, FEDEX, or by air or by sea
- Loading port: Shenzhen or Hongkong



Company Information

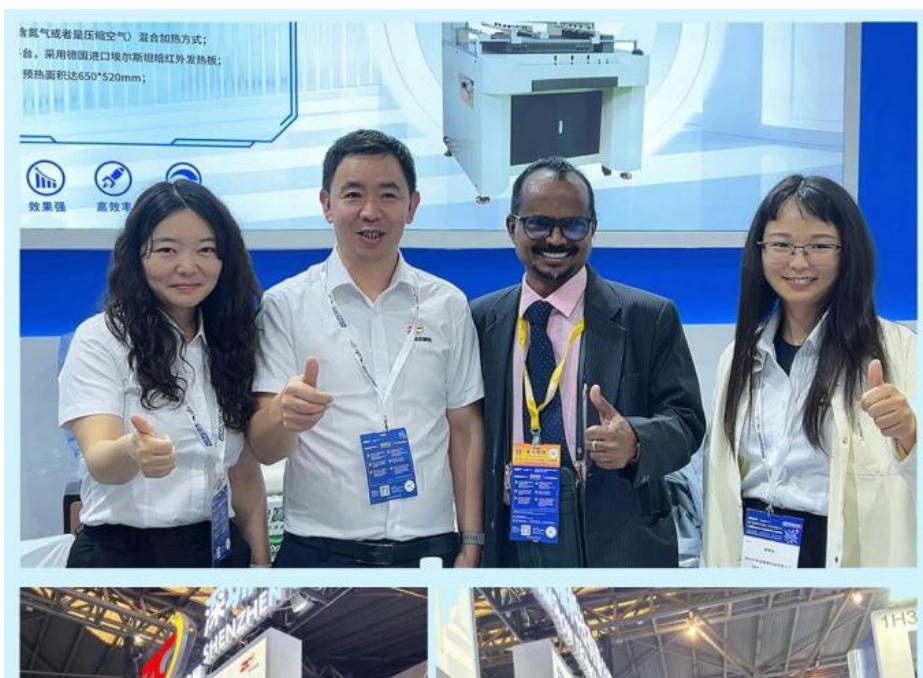
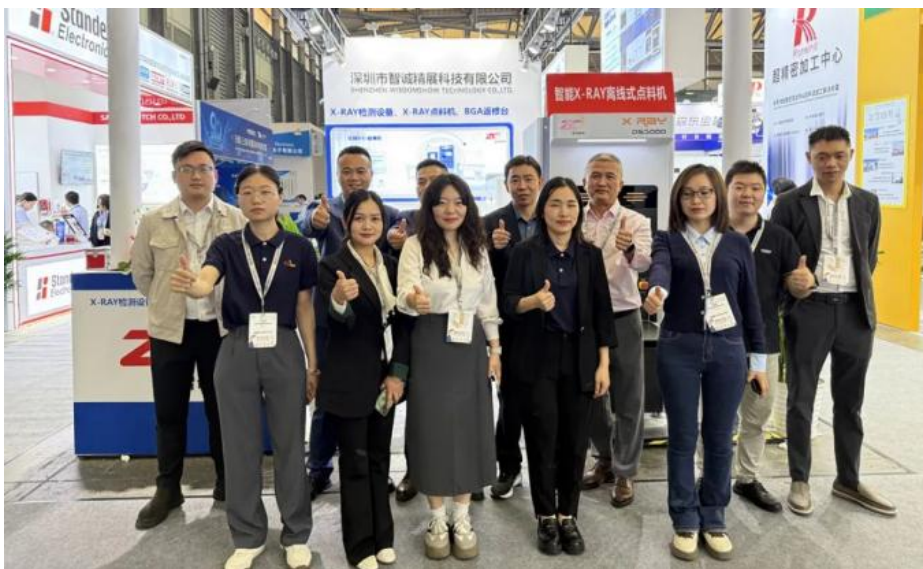


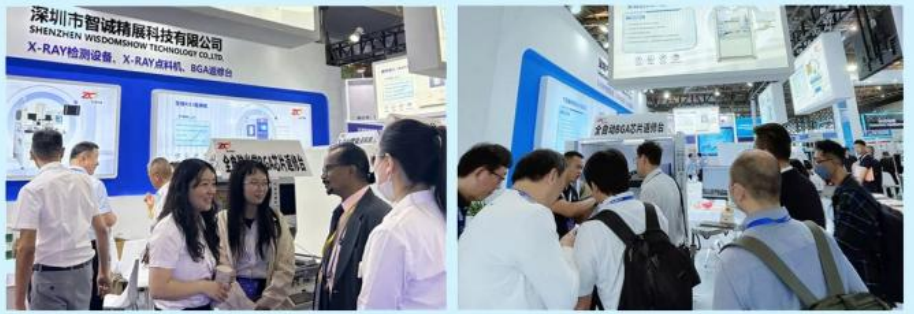
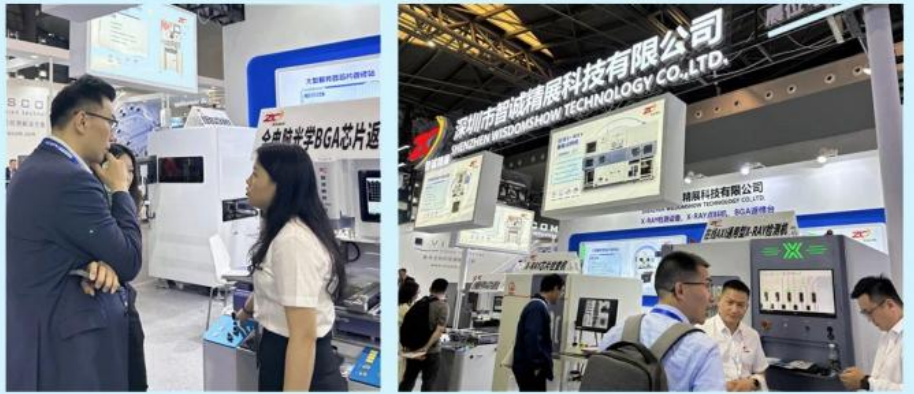




Shenzhen Wisdomshow Technology Co., Ltd. was founded in 2011 by a team of experienced engineers and sales experts. Specializing in BGA rework stations and X-RAY inspection equipment, the company has grown rapidly through continuous R&D and technological innovation. In 2015, it expanded into the X-RAY field, launching several advanced inspection systems. Our factory bases on Shenzhen Baoan, has about ten thousand square meters.

With ISO9001 and CE certifications, multiple patents, and strong customization capabilities, Wisdomshow serves clients across Asia, Europe, and North America. Its solutions are widely used in server motherboard repair, LED assembly, and smartphone production. Guided by the principles of professionalism, innovation, and integrity, the company continues to earn global trust and recognition.







Our Advantages and Service

Contact:

24 hours technical support by email or calling

Warranty:

One year free, but all the other relative cost should be on the buyer's account

Technology Support:

Provide Demo operation video for training; If you have time, welcome to our company, we will arrange engineers to show you the operation

Service:

Friendly English User manual provided; Good and professional after-sales service

Price:

Give great discount to AGENCY to ensure agents profit

Certificate Of Conformity	BORY
No.: BAC220590145S	
Applicant.....	Shenzhen Wisdomshow Technology Co.,Ltd.
Address.....	3F Eastern, 2F Eastern Building 7, Haosi Western Industrial Park, Heyi Community, Shajing Town, Bao'an District, Shenzhen, China
Manufacturer.....	Shenzhen Wisdomshow Technology Co.,Ltd.
Address.....	3F Eastern, 2F Eastern Building 7, Haosi Western Industrial Park, Heyi Community, Shajing Town, Bao'an District, Shenzhen, China
Trademark.....	N/A
Product.....	BGA rework station
Model(s)	WDS-750, WDS-650, WDS-620, WDS-800A, WDS-1250, WDS-520, WDS-580, WDS-680, WDS-700, WDS-900, WDS-1390
Directives.....	Machinery Directive 2006/42/EC
Standards.....	EN ISO 12100:2010 EN 60204-1:2018
Report No.....	B2205TR90145S
Remark: The certification is only valid for the equipment and configuration described, in conjunction with the test data detailed above. ★ The CE mark as shown beside can be used, under the responsibility of the manufacturer, after completion of an EC Directive of Conformity and compliance with all relevant EC Directive.	
CE	Approved by/Date: 
Shenzhen Bory Technology Service Co., Ltd.	
Tel: +86 755 2328 6925 Fax: +86 755 2328 6935 Email: Service@bory.biz http: www.bory.biz	501, Building 10, Xinlitang Building, Gangbei Industrial Park, Huangtian Community, Hangcheng Street, Baoan District, Shenzhen, Guangdong, China.

----- DOCUMENT RECEIVED, FILED, & ACKNOWLEDGED -----

This automated notification from the CeSub Submission Process contains general information about the
aforementioned submission:

Accession Number: **2432788-000**

Date Loaded: **Sep 30, 2024**

Document Date: **Sep 27, 2024**

Establishment Name: **SHENZHEN WISDOMSHOW TECHNOLOGY CO.,LTD**

Purpose: **This submission is a(n) Annual Report. These Cabinet X-Ray Systems, Non-Medical cover
the period from July 01, 2023 to June 30, 2024.**

Submitter: **Wallace Xu**

Email: **wallace.xu@fdace.cn**

Reporting Official: **Ziwen Li**

Email: **dwd@wdsbga.cn**

If you meet all other applicable FDA requirements, you may market the product(s) reported. Please be aware
that additional electronic product radiation control or medical device regulations may apply to your product,
such as:

21 CFR 1002.11, requiring report supplements under certain circumstances following the same
reporting forms as used for product reports on your products

21 CFR 1002.13, requiring annual reports to be submitted each year by September 1 using the
appropriate reporting form for annual reports

21 CFR 1010 - 1050, requiring certification to FDA radiation safety performance standards

21 CFR 807, requiring manufacturer registration and device listing, and

21 CFR 807, 812 and 814, requiring medical device clearance or approval

For further information see:

Radiological Health web site - <http://www.fda.gov/Radiation-EmittingProducts/default.htm>

FDA Electronic Submissions Gateway website -

<http://www.fda.gov/ForIndustry/ElectronicSubmissionsGateway/default.htm>

If you have any questions, please contact the Director of the Division of Radiological Health, or the branch
chief of your respective product area, as listed on the CDRH Management Directory, under the Office of In
Vitro Diagnostics and Radiological Health, Division of Radiological Health.

[http://www.fda.gov/AboutFDA/CentersOffices/OfficeofMedicalProductsandTobacco/CDRH/CDRHOffices/
ucm127854.htm](http://www.fda.gov/AboutFDA/CentersOffices/OfficeofMedicalProductsandTobacco/CDRH/CDRHOffices/ucm127854.htm)

Please include a primary (and optional secondary) contact email address in all submissions (and/or cover
letters) to facilitate electronic correspondence.

Sincerely yours,

Division of Radiological Health

Office of In Vitro Diagnostics and Radiological Health

Center for Devices and Radiological Health



**U.S. FOOD & DRUG
ADMINISTRATION**

证书号第 16583817 号



实用新型专利证书

实用新型名称: X-Ray 检测平板自动旋转机构

发 明 人: 孙尚坤

专 利 号: ZL 2021 2 0400163.4

专利申请日: 2021 年 02 月 23 日

专 利 权 人: 深圳市智诚精展科技有限公司

地 址: 518000 广东省深圳市宝安区沙井街道西环路蚝四西部工
业区 6 号 7 栋 202

授权公告日: 2022 年 05 月 24 日 授权公告号: CN 216594856 U

国家知识产权局依照中华人民共和国专利法经过初步审查, 决定授予专利权, 颁发实用新型专利证书并在专利登记簿上予以登记。专利权自授权公告之日起生效。专利权期限为十年, 自申请日起算。

专利证书记载专利权登记时的法律状况。专利权的转移、质押、无效、终止、恢复和专利权人的姓名或名称、国籍、地址变更等事项记载在专利登记簿上。



局长
申长雨

申长雨



第 1 页 (共 2 页)

其他事项参见续页

证书号第 13058639 号



实用新型专利证书

实用新型名称：一种智能 X 射线的三维透视检测设备

发 明 人：陈近刚

专 利 号：ZL 2020 2 0970702.3

专利申请日：2020 年 06 月 01 日

专 利 权 人：深圳市智诚精展科技有限公司

地 址：518000 广东省深圳市宝安区沙井街道西环路蚝四西部工
业区 6 号 7 栋 202

授权公告日：2021 年 04 月 27 日 授权公告号：CN 213068684 U

国家知识产权局依照中华人民共和国专利法经过初步审查，决定授予专利权，颁发实用新型专利证书并在专利登记簿上予以登记。专利权自授权公告之日起生效。专利权期限为十年，自申请日起算。

专利证书记载专利权登记时的法律状况。专利权的转移、质押、无效、终止、恢复和专利权人的姓名或名称、国籍、地址变更等事项记载在专利登记簿上。



局长
申长雨

申长雨



第 1 页 (共 2 页)

其他事项参见续页

Buyer Feedback

Our Customers' Voice:

"Hi mate, your best price and high purity product is so competitive in my country, this let me make much profit, my customers are really like it. cooperate with you is so wonderful! thank you!" — Richard, Turkey


"I have received my products, your packing is do discreet and perfect, it really amazed me. I will order more from you as soon as possible. thanks a lot." — Robert, Australia

"I have cooperated with you for many times, your product quality is so great, that is why I still buy the products from you. thank you." — Corentin, Brazil










C'est une excellente machine, j'ai lu qu'on pouvait mettre une micro SD avec des données, avez-vous une avec des données pour des pc et smartphones Apple ?



How about the WDS-700 bga machine ?

Very well and you Thank you for the machine I am doing very good works.

Good, glad to hear that and thanks for your support. We

Hello dear, how are you ? about one years passed, if you remember me ? Ahaha, for the machine WDS-420 supplier.

yes

what's new

Are you still working today ?

yes

May I know how about the use of WDS-420 ?

Is it a good helper for your company ?

we used it its working fine

Good, glad to hear that. At the end of last year, we have

Many thanks from

many works since i got machine

Alaha, More customer. More business. More money. And then you could buy a new one

How about the WDS-480 bga machine ?

How about the WDS-480 bga machine ?

Next year i buy another machine to you. i upgrade to some automatic, pick and place machine

WDS-480 is good, i got already the money i spend for it





Order Now

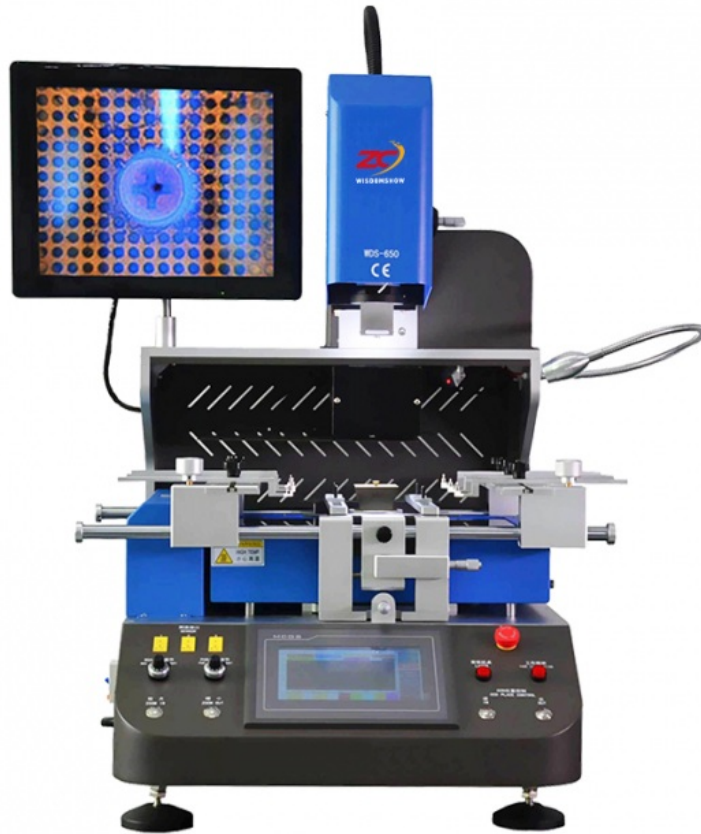
If any questions please send INQUIRY or CHAT with us,
We will be glad to service you!
Now you can order freely!!!
Plz Contact me as below guide, we are glad to give you the best price!

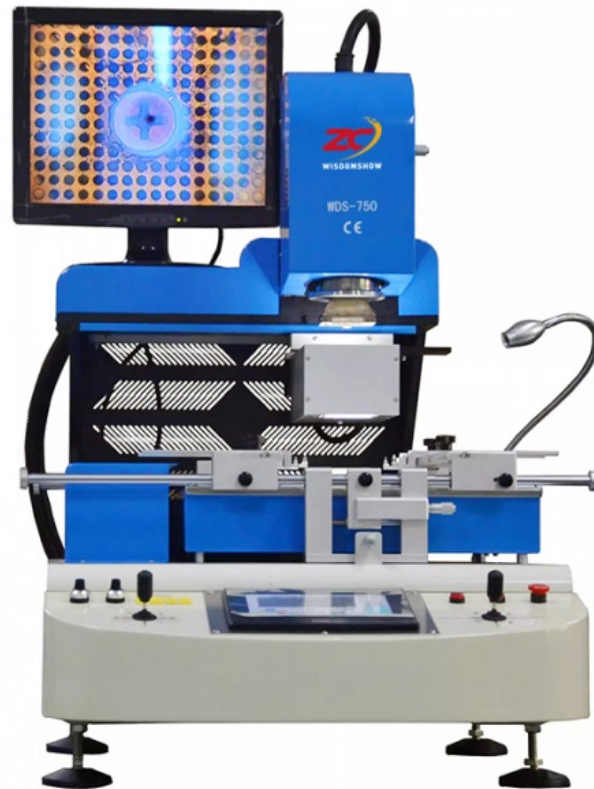
Related Products



WDS-S7







WDS-750



WDS-800A



WDS-1250



Shenzhen Wisdomshow Technology Co.,Ltd



+86 18926538696



elysia.li@wdsbga.cn



bgaxraymachine.com

No.6,Haosi Western Industry,Shangjing Town,Bao'an District,Shenzhen,China