



## S-9200 Microfocus X-ray Inspection Machine with AI-Powered Defect Detection and 900x700mm Inspection Area

Our Product Introduction

for more products please visit us on [bgaxraymachine.com](http://bgaxraymachine.com)

### Basic Information

- Place of Origin: Guangdong, China
- Brand Name: wisdomshow
- Minimum Order Quantity: 1
- Price: CN¥484,358.80

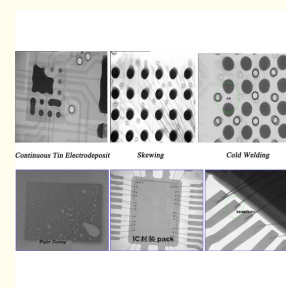
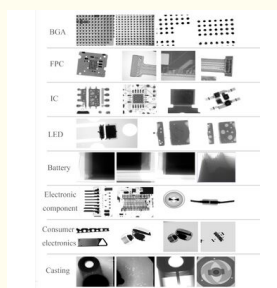
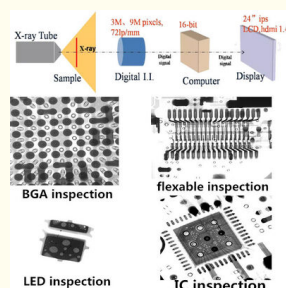


### Product Specification

- Weight: 2000 KG
- Voltage: 220V/110V
- X-ray Source: Sealed Microfocus Source
- Radiation Safety: <1u SV/H
- Cooling Method: Air-cooled
- Detector Type: Digital HD Pad
- Computer: Dell Windows 10
- Max Object Size: 900x700mm
- Power Rate: 2500W
- Equipment Size: 2020x1400x1830mm
- Detector Resolution: 1536x1536 Pixel
- X-ray Spot Size: 85  $\mu$ m
- Scanning Speed: 20 Fps
- Max Sample Weight: 10 Kg
- Smallest Defect Size: 5  $\mu$ m



### More Images



## Product Description

### S-9200 IC Metal Component Inspection X-ray SMD PCB Detection Machine

The S-9200 is an advanced, high-performance micro-focus X-ray inspection system, integrating Japanese Hamamatsu micro-focus X-ray tubes and a high-definition flat-panel detector for superior imaging quality. Designed for precision non-destructive testing (NDT), it delivers high-resolution, real-time inspection with AI-powered defect recognition, making it an efficient and cost-effective solution for industrial quality control.



#### Key Features

**High-Resolution Imaging:** 1536×1536 pixel detector with 5.8 Lp/mm resolution, 130 kV microfocus X-ray source (85 μm spot size) for sharp imaging, 20 fps real-time scanning for dynamic inspection

**AI-Powered Defect Detection:** Built-in AI algorithms for automatic flaw recognition (voids, cracks, misalignment, etc.), customizable detection models for industry-specific needs

**Large Inspection Area & High Load Capacity:** Scanning area: 900×700 mm (adjustable), max sample weight: 10 kg (industrial-grade)

**Safety & Compliance:** Radiation leakage <1 μSv/h (below international safety limits), lead-steel shielding + safety interlock system, certified with China Radiation Safety License



### Standard Configuration

X-Ray Source ×1 (Hamamatsu 130 kV microfocus tube)

Flat-Panel Detector ×1 (iRAY 130×130 mm)

Industrial PC ×1 (Advantech)

24" HD Monitor ×1

Motion Control System ×1 (Googoltech card + servo motors)

Lead-Shielded Chamber ×1 (Wisdomshow-designed)

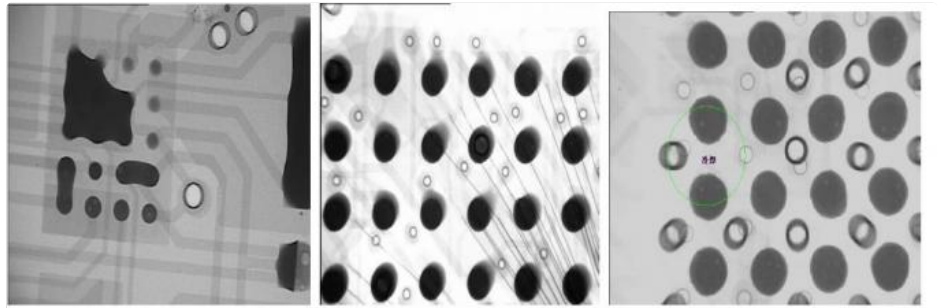
Inspection Software ×1 (AI algorithm supported)

### Widely Applied For

**Semiconductor & Electronics:** BGA, CSP, Flip Chip, LED, IC, PCB, Fuse, Diode

**Battery Industry:** Pouch cells, 18650 batteries, electrode alignment

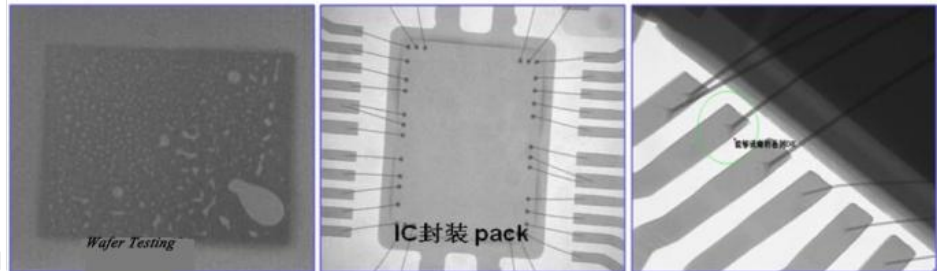
**Advanced Manufacturing:** Small metal castings, electronic connectors, cables, photovoltaic modules



*Continuous Tin Electrodeposit*

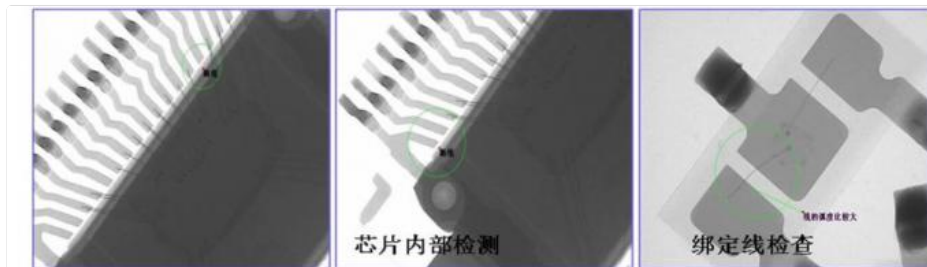
*Skewing*

*Cold Welding*



*Wafer Testing*

*IC封装 pack*

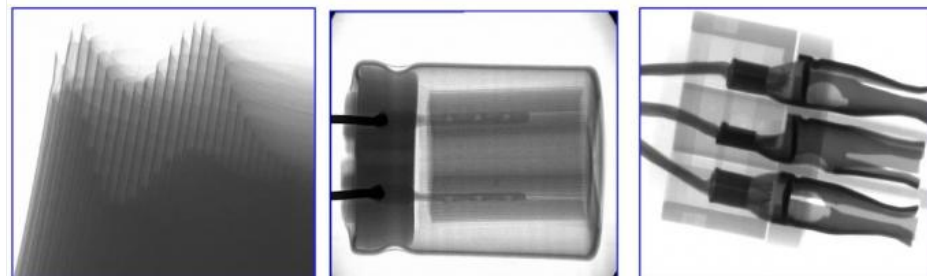


*芯片内部检测*

*绑定线检查*

*In-Chip Detection*

*Binding Line Detection*



## Frequently Asked Questions

### What is the smallest detectable defect size?

5  $\mu\text{m}$ -level (depends on material density/thickness).

### Can it integrate with automated production lines?

Yes, supports PLC communication for inline inspection.

### Is radiation exposure safe?

Yes! Leakage is  $<1 \mu\text{Sv/h}$  (lower than natural background radiation).

## Product Parameters

Classification	Item	Type	Parameters and Functions
Hardware Configuration	X-Ray Source	Brand Type	HAMAMATSU (Japan) Closed Microfocus X-ray Source
		Voltage Current	90 kV, 10-200 uA
		Focus Size	5 $\mu$ m
		Max Power	8 W
	Imaging Unit	Brand Type	iRAY Amorphous Silicon Flat Panel Detector
		Imaging Area	130 mm $\times$ 130 mm
		Photosensitive Unit Size	85 $\mu$ m
		Pixel Matrix	1536 $\times$ 1536
		Resolution	5.8 Lp/mm
		Tilt Angle	0-90° viewing angle (45° to the left and right)
		Image Frame Rate	20 fps
		Magnification Ratio	Geometric Magnification 150X
	Computer	Host Brand	Advantech Industrial Computer
		Industrial Computer Configuration	CPU: I5 6500, RAM: 8G, HDD: 1TB
		Monitor	24" HD Monitor
	Loading Platform	Loading Area	520 mm $\times$ 520 mm
		Maxi Inspection Area	520 mm $\times$ 520 mm
		Motion Travel (Z-axis)	Detection Panel Z1=300 mm X-ray Source Z2=300 mm
		Motion Travel (X-axis)	X axis=510 mm, Y axis=405 mm
		Max Sample Weight	10 kg
		Movement Control Method	Joystick, Mouse and Keyboard Tri-combination
	Navigation System	Configuration	Hikvision HD Camera
Software System	Software Introduction	Intellectual Property	Self-developed with independent intellectual property rights (IPR) in software
	Software Functions	Automatic Image Setting	Recording position coordinates and parameter information of characteristic points
		Automatic Navigation Functionality	Facilitate quick movement to inspection points
		Calculation Feature	Capable of measuring bubbles in electronic or semiconductor products
		Algorithm Model	Customizable detection algorithm models based on requirements

		Location Editing Functionality	Easily achieve multi-point position detection
Machine Parameters		Weight	~1250 kg
		Power Supply	220 V / 50 Hz
		Max Power	2.0 kW
		Equipment Dimensions	1300mm(L) * 1320mm(W) * 1800mm(H)
		Radiation Leakage Dose	<1 $\mu$ Sv/h
X-Ray Safety		1. Radiation Leakage Dose: <1 $\mu$ Sv/h	
		2. The protective material of the casing is composed of a steel-lead-steel structure, and the front door window uses leaded glass for radiation protection.	
		3. Safety interlock feature: limit switches are installed at all door positions. When the door is opened, the X-ray source automatically cuts off power.	
		4. Utilize status indicator lights to indicate the operational status of the X-ray source.	
		5. The equipment has obtained the "Exemption Filing for Radioisotopes and Radiation Devices".	

### Packing & Shipping

Standard Export Wooden cases

Delivery in 2 workdays after payment confirm

Shipping by TNT, DHL, FEDEX, or by air or by sea

Loading port: Shenzhen or Hongkong









## Company Information

---



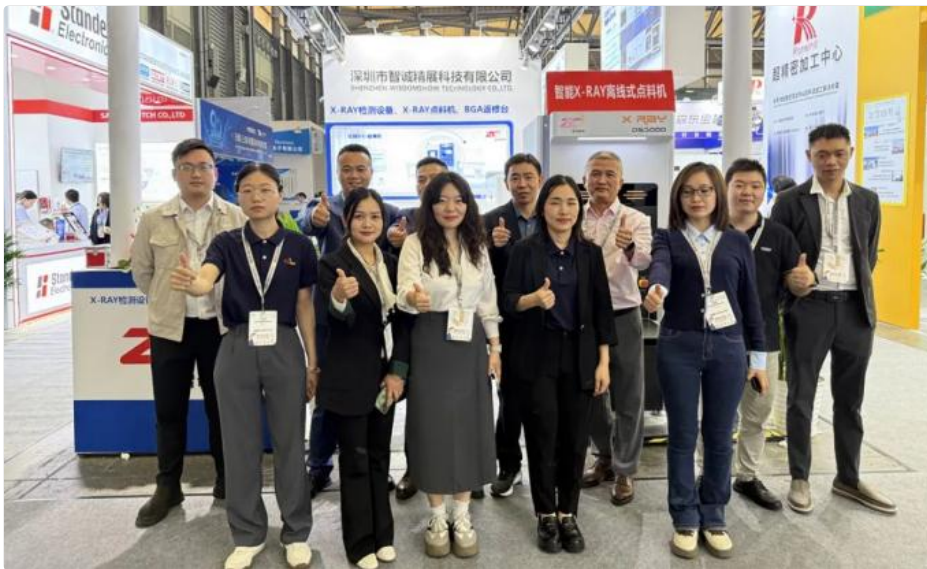




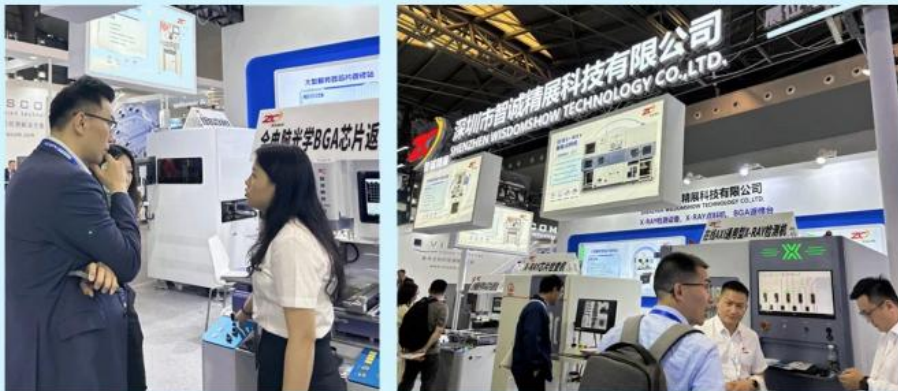


Shenzhen Wisdomshow Technology Co., Ltd. was founded in 2011 by a team of experienced engineers and sales experts. Specializing in BGA rework stations and X-RAY inspection equipment, the company has grown rapidly through continuous R&D and technological innovation. In 2015, it expanded into the X-RAY field, launching several advanced inspection systems. Our factory bases on Shenzhen Baoan, has about ten thousand square meters.

With ISO9001 and CE certifications, multiple patents, and strong customization capabilities, Wisdomshow serves clients across Asia, Europe, and North America. Its solutions are widely used in server motherboard repair, LED assembly, and smartphone production. Guided by the principles of professionalism, innovation, and integrity, the company continues to earn global trust and recognition.











## Our Advantages and Service

**Contact:** 24 hours technical support by email or calling

**Warranty:** one year free, but all the other relative cost should be on the buyer's account

**Technology Support:** Provide Demo operation video for training; If you have time, welcome to our company, we will arrange engineers to show you the operation

**Service:** Friendly English User manual provided; Good and professional after-sales service

**Price:** Give great discount to AGENCY to ensure agents profit

# Certificate Of Conformity

## BORY

No.: BAC220590145S

**Applicant**.....: Shenzhen Wisdomshow Technology Co.,Ltd.  
**Address**.....: 3F Eastern, 2F Eastern Building 7, Haosi Western Industrial Park,  
Heyi Community, Shajing Town, Bao'an District, Shenzhen, China  
**Manufacturer**.....: Shenzhen Wisdomshow Technology Co.,Ltd.  
**Address**.....: 3F Eastern, 2F Eastern Building 7, Haosi Western Industrial Park,  
Heyi Community, Shajing Town, Bao'an District, Shenzhen, China  
**Trademark**.....: N/A  
**Product**.....: BGA rework station  
**Model(s)** .....: WDS-750, WDS-650, WDS-620, WDS-800A, WDS-1250, WDS-520,  
WDS-580, WDS-680, WDS-700, WDS-900, WDS-1390  
**Directives**.....: Machinery Directive 2006/42/EC  
**Standards**.....: EN ISO 12100:2010  
EN 60204-1:2018  
**Report No.**.....: B2205TR90145S

Remark: The certification is only valid for the equipment and configuration described, in conjunction with the test data detailed above.

★ The CE mark as shown beside can be used, under the responsibility of the manufacturer, after completion of an EC Directive of Conformity and compliance with all relevant EC Directive.



Approved by/Date:



**Shenzhen Bory Technology Service Co., Ltd.**

Tel: +86 755 2328 6925  
Fax: +86 755 2328 6935  
Email: Service@bory.biz  
http: www.bory.biz

501, Building 10, Xinlitang Building, Gangbei  
Industrial Park, Huangtian Community,  
Hangcheng Street, Baoan District,  
Shenzhen, Guangdong, China.



----- DOCUMENT RECEIVED, FILED, & ACKNOWLEDGED -----

This automated notification from the CeSub Submission Process contains general information about the aforementioned submission:

Accession Number: **2432788-000**

Date Loaded: **Sep 30, 2024**

Document Date: **Sep 27, 2024**

Establishment Name: **SHENZHEN WISDOMSHOW TECHNOLOGY CO.,LTD**

Purpose: **This submission is a(n) Annual Report. These Cabinet X-Ray Systems, Non-Medical cover the period from July 01, 2023 to June 30, 2024.**

Submitter: **Wallace Xu**

Email: **wallace.xu@fdace.cn**

Reporting Official: **Ziwen Li**

Email: **dwd@wdsbga.cn**

-----  
If you meet all other applicable FDA requirements, you may market the product(s) reported. Please be aware that additional electronic product radiation control or medical device regulations may apply to your product, such as:

21 CFR 1002.11, requiring report supplements under certain circumstances following the same reporting forms as used for product reports on your products

21 CFR 1002.13, requiring annual reports to be submitted each year by September 1 using the appropriate reporting form for annual reports

21 CFR 1010 - 1050, requiring certification to FDA radiation safety performance standards

21 CFR 807, requiring manufacturer registration and device listing, and

21 CFR 807, 812 and 814, requiring medical device clearance or approval

For further information see:

Radiological Health web site - <http://www.fda.gov/Radiation-EmittingProducts/default.htm>

FDA Electronic Submissions Gateway website -

<http://www.fda.gov/ForIndustry/ElectronicSubmissionsGateway/default.htm>

If you have any questions, please contact the Director of the Division of Radiological Health, or the branch chief of your respective product area, as listed on the CDRH Management Directory, under the Office of In Vitro Diagnostics and Radiological Health, Division of Radiological Health.

<http://www.fda.gov/AboutFDA/CentersOffices/OfficeofMedicalProductsandTobacco/CDRH/CDRHOffices/ucm127854.htm>

Please include a primary (and optional secondary) contact email address in all submissions (and/or cover letters) to facilitate electronic correspondence.

Sincerely yours,

Division of Radiological Health

Office of In Vitro Diagnostics and Radiological Health

Center for Devices and Radiological Health



**U.S. FOOD & DRUG  
ADMINISTRATION**

证书号第 16583817 号



## 实用新型专利证书

实用新型名称: X-Ray 检测平板自动旋转机构

发 明 人: 孙尚坤

专 利 号: ZL 2021 2 0400163.4

专利申请日: 2021 年 02 月 23 日

专 利 权 人: 深圳市智诚精展科技有限公司

地 址: 518000 广东省深圳市宝安区沙井街道西环路蚝四西部工  
业区 6 号 7 栋 202

授权公告日: 2022 年 05 月 24 日 授权公告号: CN 216594856 U

国家知识产权局依照中华人民共和国专利法经过初步审查, 决定授予专利权, 颁发实用新型专利证书并在专利登记簿上予以登记。专利权自授权公告之日起生效。专利权期限为十年, 自申请日起算。

专利证书记载专利权登记时的法律状况。专利权的转移、质押、无效、终止、恢复和专利权人的姓名或名称、国籍、地址变更等事项记载在专利登记簿上。



局长  
申长雨

申长雨



第 1 页 (共 2 页)

其他事项参见续页

证书号第 13058639 号



## 实用新型专利证书

实用新型名称：一种智能 X 射线的三维透视检测设备

发 明 人：陈近刚

专 利 号：ZL 2020 2 0970702.3

专利申请日：2020 年 06 月 01 日

专 利 权 人：深圳市智诚精展科技有限公司

地 址：518000 广东省深圳市宝安区沙井街道西环路蚝四西部工  
业区 6 号 7 栋 202

授权公告日：2021 年 04 月 27 日 授权公告号：CN 213068684 U

国家知识产权局依照中华人民共和国专利法经过初步审查，决定授予专利权，颁发实用新型专利证书并在专利登记簿上予以登记。专利权自授权公告之日起生效。专利权期限为十年，自申请日起算。

专利证书记载专利权登记时的法律状况。专利权的转移、质押、无效、终止、恢复和专利权人的姓名或名称、国籍、地址变更等事项记载在专利登记簿上。



局长  
申长雨

申长雨



第 1 页 (共 2 页)

其他事项参见续页

### Buyer Feedback

"Hi mate, your best price and high purity product is so competitive in my country, this let me make much profit, my customers are really like it. cooperate with you is so wonderful!! thank you!" — Richard, Turkey

"i have received my products, your packing is do discreet and perfect, it really amazed me. i will order more from you as soon as possible. thanks a lot." — Robert, Australia


"i have cooperated with you for many times, your product quality is so great, that is why i still buy the products from you. thank you." — Corentin, Brazil












C'est une excellente machine, j'ai lu qu'on pouvait mettre une micro SD avec des données, avez-vous une avec des données pour des pc et smartphones Apple ?



How about the WDS-700 bga machine ?

Very well and you Thank you for the machine I am doing very good works.

Good, glad to hear that and thanks for your support. We

Helle Asst, how are you ? about one years passed, if you remember me ? alaba, for the machine WDS-410 supplier.

yes

what's new

Are you still working today ?

yes

May I know how about the use of WDS-410 ?

Is it a good helper for your company ?

we used it its working fine

Good, glad to here that ... by end of last year, we have

Any work note

many works since a get machine

Alaba, More customer. More business, More money, and that you could buy a new car

How about the WDS-410 bga machine ?

And year I buy another machine to you... I upgrade to some automatic, pick and place machine

WDS-410 is good, I got already the money I spend for it



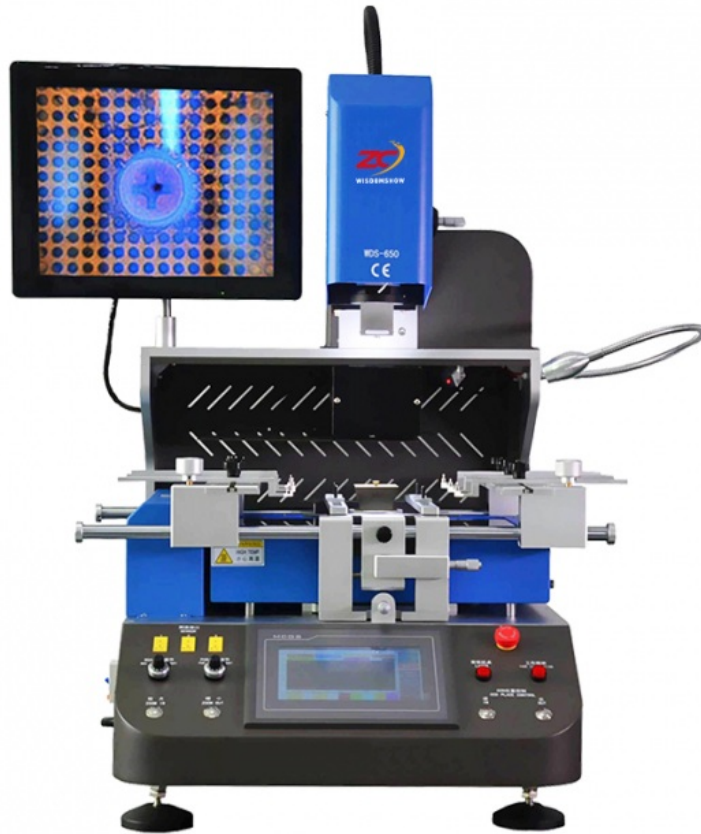


#### Relative Products

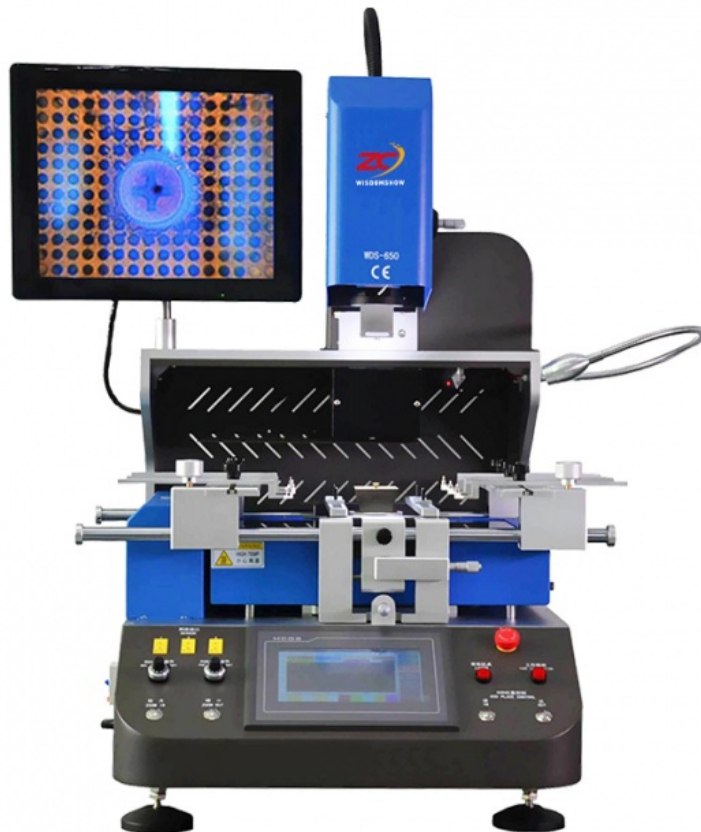


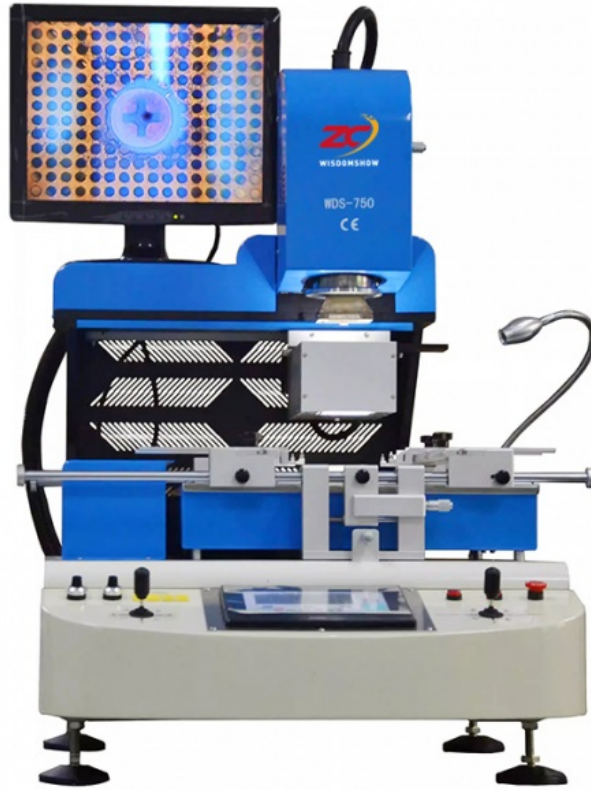
WDS-S7





WDS-620









WDS-800A



## Order Now

If any questions please send INQUIRY or CHAT with us,  
We will be glad to service you!  
Now you can order freely!!!  
Plz Contact me as below guide, we are glad to give you the best price!



**Shenzhen Wisdomshow Technology Co.,Ltd**



+86 18926538696



elysia.li@wdsbga.cn



bgaxraymachine.com

No.6,Haosi Western Industry,Shangjing Town,Bao'an District,Shenzhen,China