



Semi-Automatic BGA Rework Station with 8200W Max Input Power and Hot Air Heating for Precision PCB Repair

Our Product Introduction

for more products please visit us on bgaxraymachine.com

Basic Information

- Place of Origin: Guangdong, China
- Brand Name: Wisdomshow
- Minimum Order Quantity: 1
- Price: CN¥88,581.12-93,425.40

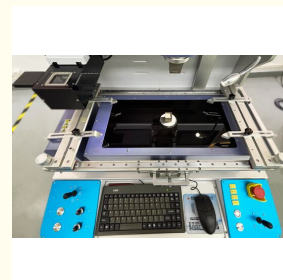
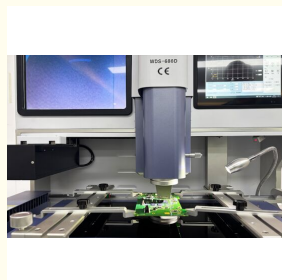
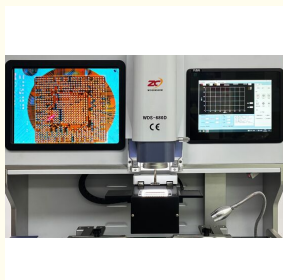


Product Specification

- Max Input Power: 8200W
- Rated Capacity: 5800~8200W
- Voltage: 110V, 220V
- Current: 15A
- Dimensions: L820*W760*H1400mm
- Weight: 200kg
- Upper Heating Power: 1600W
- Lower Heating Power: 1200W
- IR Heating Power: 2400~4800W
- Power Supply: Two-phase 220V, 50/60Hz
- PCB Size: 10*10mm~590*400mm
- Applicable Chips: 0.8*0.8mm-90*90mm
- Maximum Load: 300G
- Chip Magnification: 2-80 Times
- Preheating Area: 500x420mm



More Images



Product Description

Precision Automatic BGA Rework Station WDS-880D

The WDS-880D is a high-end, fully automatic BGA rework system designed for precision, efficiency, and reliability in advanced PCB repair. With intelligent temperature curve generation, real-time thermal monitoring, and solid-state control, the WDS-880D provides stable, repeatable results even under lead-free conditions. Ideal for electronics manufacturing, R&D labs, automotive electronics, and high-reliability repair centers.



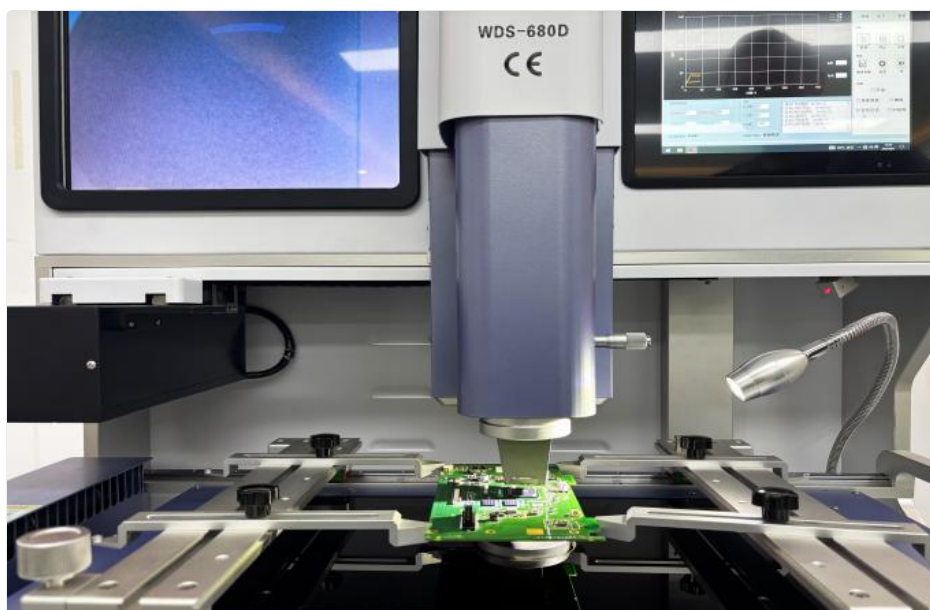
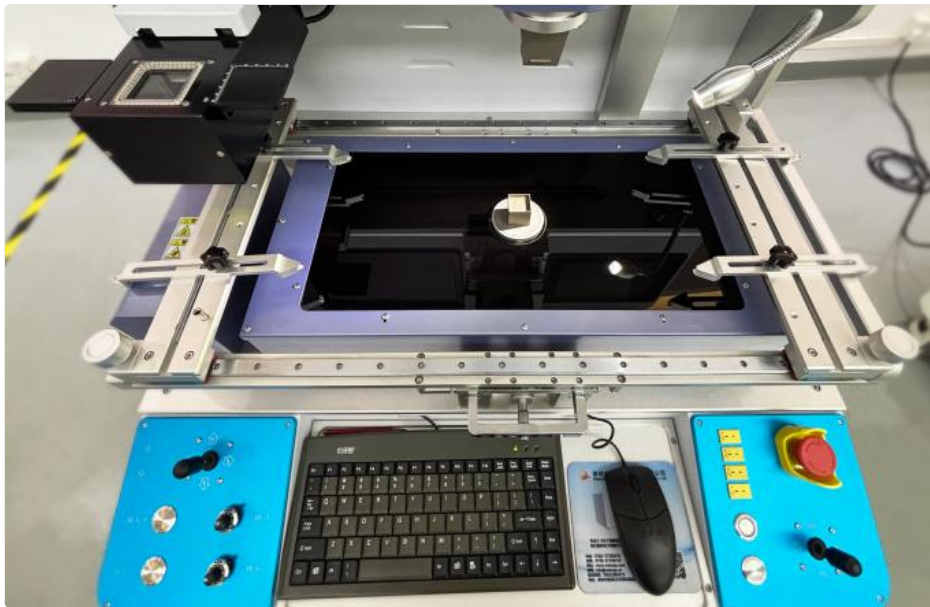
Key Features

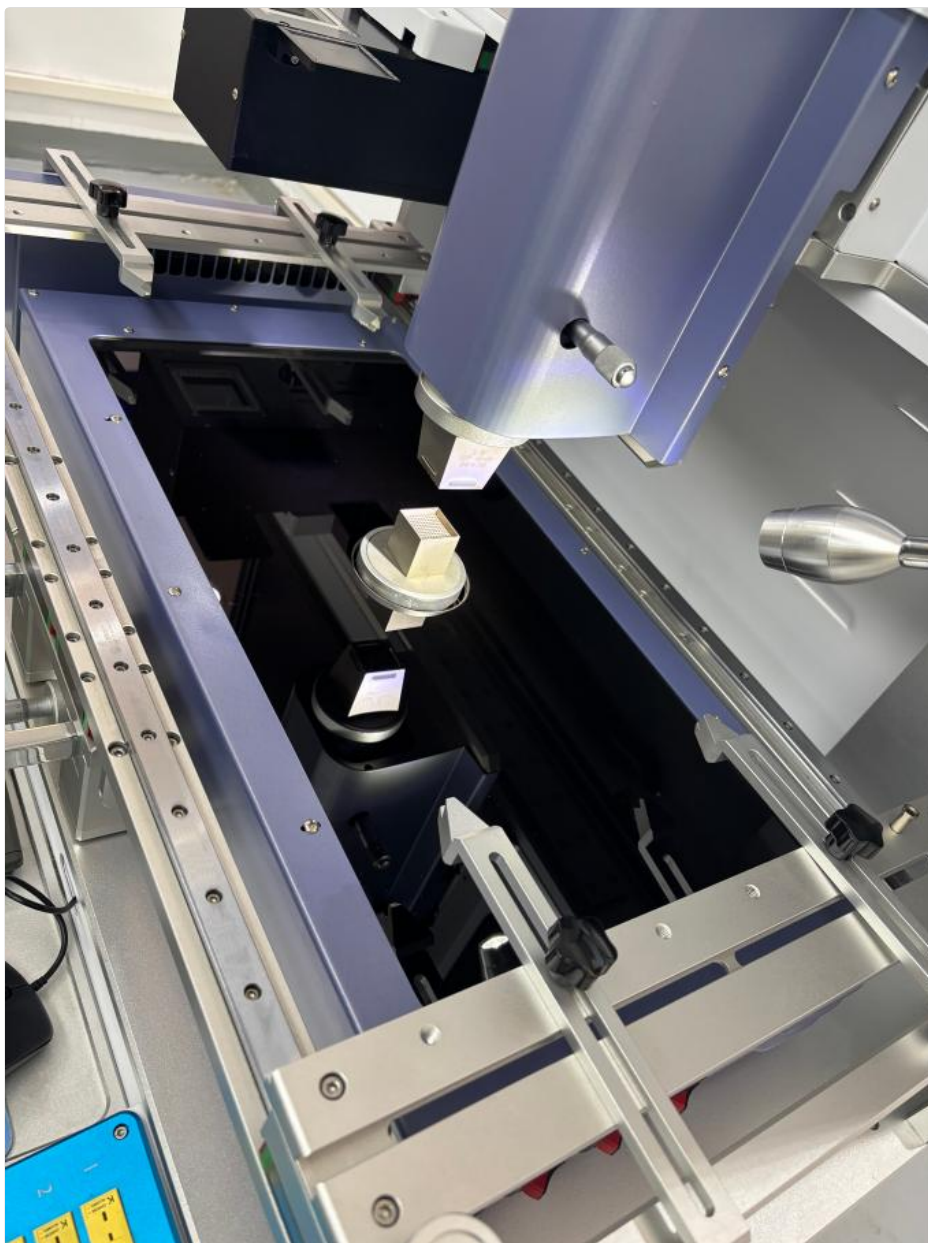
- Integrated hot air head and placement head design with automatic placement, soldering, and removal capabilities
- Upper hot air system for rapid, uniform heating and cooling (50-80°C drop), meeting lead-free soldering requirements
- Lower heating zone with hybrid infrared and hot air system for rapid PCB heating (up to 10°C/s) with uniform temperature distribution
- Synchronized upper and lower zones with automatic positioning within the bottom infrared preheating zone
- High-precision sliders for accurate BGA and PCB placement
- Premium German-imported infrared gold-plated light tubes and anti-glare constant-temperature glass (resistant to 1800°C)
- Movable preheating platform, clamping mechanism, and cooling system in X-axis for safer PCB positioning
- Automatic motor-controlled X and Y axis movement with maximum clamping plate size of 590 x 400 mm
- Dual joystick control, alignment lenses, and built-in vacuum pump with precise nozzle adjustment
- Automatic material detection and placement height sensing with 10-gram pressure control
- Color optical vision system with dual-color spectroscopic, magnification, and autofocus capabilities
- Various alloy hot air nozzles with 360° rotation positioning
- 4 temperature measurement ports with multi-point real-time monitoring and analysis
- Solid-state operating display for safe and reliable temperature control
- Automatic generation of standard SMT temperature removal curves
- Optional camera for observing solder ball melting points

The Total Power	5800~8200W
Upper Heating Power Supply	1600W
Lower Heating Power Supply	1200W
IR Heating Power Supply	2400~4800W
Power Supply	Two-phase 220V, 50/60Hz
Positioning Method	V-shaped slots fix the PCB, laser positioning lights quickly locate the position, and the motor can be moved freely on the X and Y axes through the joystick.
Temperature Control	High-precision K-type thermocouple (Ksensor) closed-loop control (Closed Loop), independent upper and lower temperature measurement, temperature control accuracy can reach ± 1 degree.
Electrical Appliance Selection	PC control system + high-precision temperature control module + motion control board + Panasonic servo + stepper driver
Tin point monitoring	External camera monitors the solder ball melting process during welding (optional)
MES system	Reserved MES port
Feeding device	Automatic feeding device
Maximum PCB Size	590×400mm
Minimum PCB Size	10×10mm

Number of temperature measuring interfaces	4
Chip magnification	2-80 times
The PCB Thickness	0.5-10mm
Applicable chips	0.8*0.8mm-90*90mm
Minimum chip spacing	0.15mm
Maximum load for mounting	300G
Mounting accuracy	± 0.01 mm
Overall Dimensions	820×760×1400mm
Machine Weight	About 200kg
Other Features	Dual joystick operation, automatic/manual mode switching, 7-axis electric motion control, original dual-channel heating technology PCB preheating, MES port; smoke purification system







Packaging & Shipping

Standard export wooden package for BGA rework station

Delivery within 15 workdays after payment confirmation

Shipping via TNT, UPS, DHL, FEDEX (IE), Aramex, air, or sea

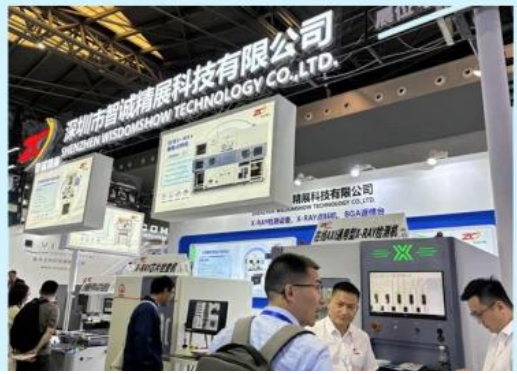
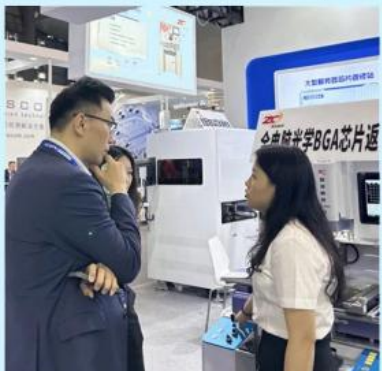
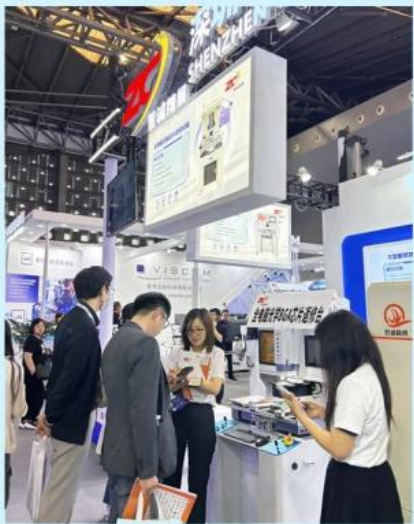
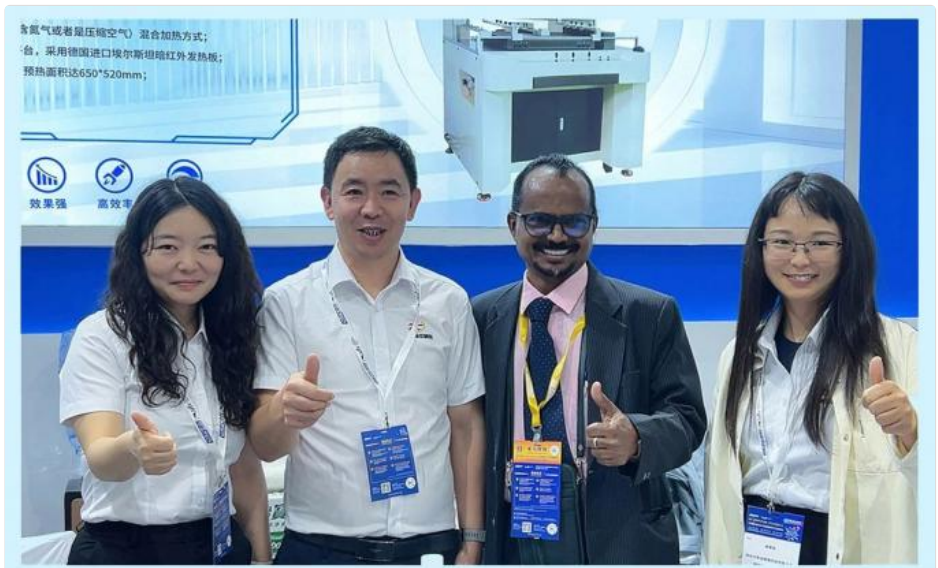
Loading Port: Shenzhen or Hongkong

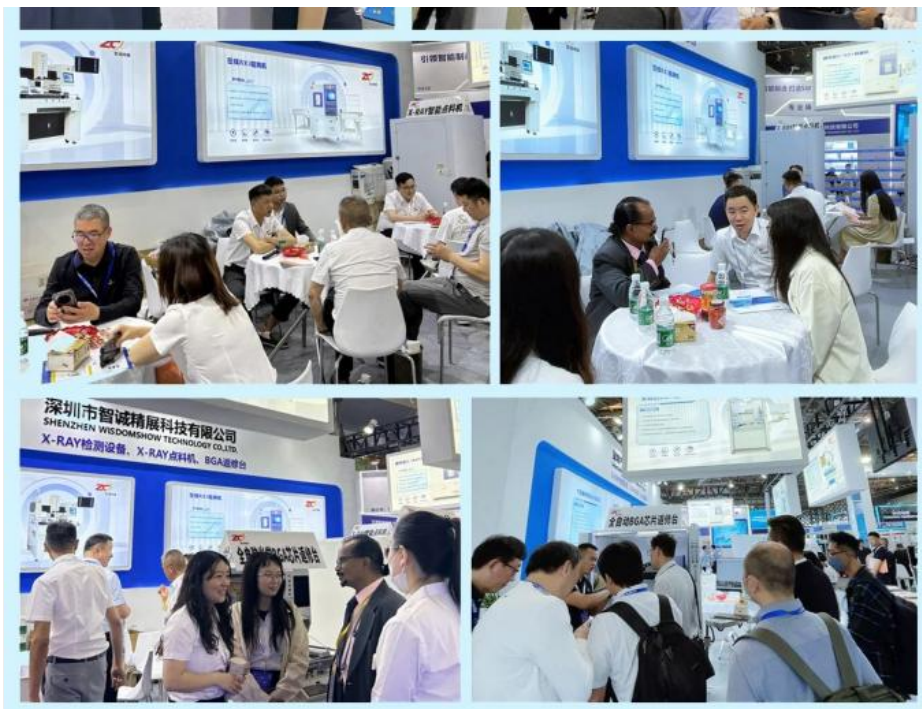


Company Information

Welcome to visit our company! We are a factory with over 11 years of experience manufacturing BGA rework stations, X-ray inspection, and X-ray counting machines. Our 3000 square meter facility serves global brand distributors.







Frequently Asked Questions

Q1: Are you a Trading Company or Manufacturer?

A1: We are a factory with over 11 years of experience manufacturing BGA rework stations, X-ray inspection and X-ray counting machines. We have a 3000 square meter factory and are looking for global brand distributors.

Q2: What is your quality control process?

A2: We use premium PLC materials and all products are patented and certified. We perform 100% testing on all products before packing with an excellent production and QC process to ensure every product works properly before shipment.

Q3: What's your MOQ?

A3: No minimum order quantity! We accept single unit orders and provide retail service for all orders.

Q4: How can I trust your company?

A4: We welcome factory visits and have many distributors in China. Our brand and models are easily searchable online, and we hold numerous authority certificates.

Q5: What payment methods do you accept?

A5: We accept most payment methods on Alibaba, primarily T/T and Western Union.

Q6: What's your best price for this product?

A6: We provide competitive pricing along with excellent service for all customers.

Q7: What are your shipment terms and delivery time?

A7: Standard delivery within 15 days, depending on order quantity. We maintain ample stock for standard items with 1-2 business day delivery for in-stock items.

Our Services

Pre-Sales Service

All production lines have adequate quality control with independent QA/QC inspectors. All products are CE & ISO certified.

After-Sales Service

Free spare parts and service within 12 months warranty (other costs borne by buyer). We provide demo operation videos for training and welcome factory visits for hands-on testing with engineer support.

Your inquiry will be replied to within 24 hours

Additional benefits include:

- Free spare parts and service within one-year warranty (other costs on buyer's account)
- Technical support with demo operation videos
- Professional after-sales service
- Attractive discounts for agency partnerships



Shenzhen Wisdomshow Technology Co.,Ltd



+86 18926538696



elysia.li@wdsbga.cn



bgaxraymachine.com

No.6,Haosi Western Industry,Shangjing Town,Bao'an District,Shenzhen,China