



Offline X-Ray Inspection Machine with 5 Um Focus Size, 20fps Image Frame Rate, and 1536x1536 Pixel Detector Resolution for Accurate BGA and SMT Inspection

Our Product Introduction

for more products please visit us on bgaxraymachine.com

Basic Information

- Place of Origin: China, Shenzhen
- Brand Name: Wisdomshow
- Model Number: S7200
- Minimum Order Quantity: 1
- Price: US \$40999-46880
- Packaging Details: Wooden Box

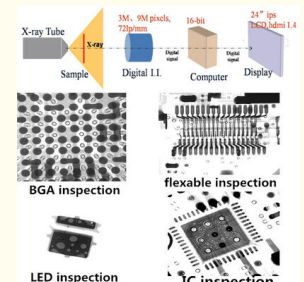
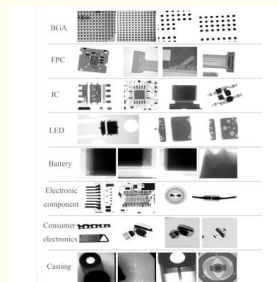


Product Specification

- Tube Current: 10-200uA
- Loading Capacity: 10kg
- Tube Voltage: 90KV
- Detector Tilt: 45° Left/right
- Radiation Safety: <1 μ SV/H
- Mounting Accuracy: 0.01mm
- Image Frame Rate: 20fps
- Tube Style: Closed
- Highlight: **5 Um Focus Size Offline X-Ray Inspection Machine**
20fps Image Frame Rate BGA X Ray Inspection Machine
1536x1536 Pixel Detector Resolution SMT X Ray



More Images



Product Description:

The Offline X-Ray Inspection Machine is a state-of-the-art solution designed for precise and efficient inspection of electronic components and assemblies. Engineered to meet the rigorous demands of modern manufacturing environments, this advanced SMT X Ray Machine offers exceptional imaging capabilities that ensure the highest quality control standards in surface-mount technology (SMT) production lines. With its innovative design and powerful features, it is an indispensable tool for detecting hidden defects and verifying the integrity of complex assemblies.

One of the standout features of this Offline X-Ray Inspection Machine is its detector tilt capability, which allows for a 45° left and right adjustment. This flexibility in detector positioning enhances the machine's ability to capture detailed images from multiple angles, providing a comprehensive view of the internal structure of components such as Ball Grid Arrays (BGAs). The ability to tilt the detector improves defect detection accuracy, making it an ideal BGA X Ray Inspection Machine for quality assurance professionals who need to identify solder joint defects, voids, and misalignments with confidence.

The user interface is designed with ease of use in mind, featuring a responsive touchscreen control panel. This intuitive interface simplifies operation, allowing users to quickly set inspection parameters, adjust imaging settings, and review results without the need for extensive training. The touchscreen control panel enhances workflow efficiency and reduces downtime, enabling operators to focus on maintaining product quality while minimizing inspection time.

At the heart of the machine lies an advanced industrial X Ray tube that operates at a tube voltage of 90KV and a tube current adjustable from 10 to 200uA. This robust X Ray tube delivers high-resolution images with excellent contrast, enabling the detection of even the smallest defects within electronic assemblies. The combination of high voltage and adjustable current provides versatile performance tailored to various inspection requirements, from delicate components to densely packed circuit boards. This makes the Offline X-Ray Inspection Machine a versatile tool suitable for a wide range of industrial applications.

Another critical technical specification is the machine's focus size, which is an impressive 5 micrometers (5 Um). This fine focus size ensures that the X-ray beam is highly concentrated, producing sharp and clear images that reveal minute details within the inspected components. Such precision is crucial for identifying subtle defects that could compromise the reliability and functionality of electronic devices. The 5 Um focus size distinguishes this machine as a premium level SMT X Ray Machine, offering unparalleled inspection accuracy.

In summary, the Offline X-Ray Inspection Machine combines cutting-edge technology with user-friendly design to deliver superior inspection performance. Its 45° detector tilt, touchscreen control panel, 5 Um focus size, and powerful industrial X Ray tube operating at 90KV and 10-200uA make it an essential tool for manufacturers seeking to enhance their quality control processes. Whether used as a standalone system or integrated into an automated production line, this BGA X Ray Inspection Machine provides reliable, high-resolution imaging that supports the detection of defects and ensures product quality.

For industries involved in electronics manufacturing, semiconductor assembly, and complex PCB inspection, this Offline X-Ray Inspection Machine represents a significant investment in quality assurance and process optimization. Its advanced features and precise inspection capabilities help reduce rework, lower defect rates, and improve overall product reliability, making it a valuable asset for any production facility committed to excellence.

Features:

- Product Name: Offline X-Ray Inspection Machine
- Tube Current: 10-200uA for precise imaging control
- Detector Resolution: 1536x1536 pixels ensuring high-quality image capture
- Radiation Safety: Less than 1 µ SV/H, compliant with industry safety standards
- Image Frame Rate: 20fps for efficient inspection speed
- Loading Capacity: Supports up to 10kg for versatile inspection applications
- Designed as an advanced Industrial X Ray Machine for robust performance
- Equipped with Inspection Tools tailored for detailed industrial analysis
- Reliable Industrial X Ray Machine suitable for various manufacturing environments

Technical Parameters:

Mounting Accuracy	0.01mm
Tube Current	10-200uA
Detector Resolution	1536x1536 Pixel
Software	Image Processing Software
Loading Capacity	10kg
Detector Tilt	45° Left/right
Radiation Safety	<1 µ SV/H
Tube Voltage	90KV
Component Recognition	Automatic
Image Frame Rate	20fps

This Offline X-Ray Inspection Machine features an Industrial X Ray Tube and is designed as an advanced SMT X Ray Machine. Utilizing a high-quality Industrial X Ray Tube ensures precise and reliable inspection performance.

Applications:

The Wisdomshow S7200 Offline X-Ray Inspection Machine is an advanced and reliable solution designed for various industrial applications. Originating from Shenzhen, China, this Industrial X Ray Machine integrates cutting-edge technology to provide high-precision inspection capabilities, ensuring product quality and safety across numerous sectors.

One of the primary application occasions for the Wisdomshow S7200 is in the electronics manufacturing industry. With its exceptional focus size of 5 μm and a frame rate of 20fps (1*1), this Industrial X Ray Machine allows for detailed inspection of complex electronic components, including printed circuit boards (PCBs), semiconductors, and microchips. The automatic component recognition feature, powered by sophisticated image processing software, facilitates quick and accurate identification of defects such as solder joint issues, misalignments, and internal structural anomalies. This makes it indispensable for quality control and failure analysis in electronics production lines.

Another important scenario for the S7200 is in the aerospace and automotive industries, where safety and reliability are paramount. The machine's Industrial X Ray Tube delivers consistent and stable radiation levels, with radiation safety measures ensuring exposure remains below 1 $\mu\text{SV/H}$, protecting operators and the environment. This allows for non-destructive testing of critical components like turbine blades, engine parts, and other metal assemblies, detecting internal cracks, voids, or inclusions that could compromise performance.

Furthermore, the Wisdomshow S7200 is well-suited for use in the medical device manufacturing sector. It enables thorough inspection of intricate medical instruments and implants to verify structural integrity and adherence to stringent safety standards. The advanced image processing software enhances visualization, facilitating precise analysis and documentation of inspection results.

In addition, this Offline X-Ray Inspection Machine is advantageous for research and development laboratories and quality assurance departments that require detailed internal imaging without the need for constant online connectivity. Its user-friendly interface and automatic component recognition streamline workflow, making it ideal for both routine inspections and complex investigative tasks.

In summary, the Wisdomshow S7200 Industrial X Ray Machine is a versatile and high-performance inspection tool suited for electronics, aerospace, automotive, medical, and research applications. Its combination of low radiation safety levels, high frame rate, fine focus size, and intelligent software capabilities ensures comprehensive and efficient non-destructive testing, maintaining product quality and enhancing operational reliability.

Customization:

Wisdomshow offers comprehensive product customization services for the Offline X-Ray Inspection Machine, model S7200, designed and manufactured in Shenzhen, China. This advanced inspection tool is equipped with state-of-the-art Image Processing Software to ensure precise and reliable analysis.

Our customization options include optimization of the Industrial X Ray Tube and enhanced detector tilt capabilities, allowing 45° left/right adjustments for improved imaging angles. With a mounting accuracy of 0.01mm, the machine guarantees exceptional precision during inspections.

Safety is paramount, and the device operates with radiation safety levels below 1 $\mu\text{SV/H}$, ensuring a secure environment for operators. Additionally, the automatic component recognition feature streamlines the inspection process, making it an indispensable inspection tool in various industrial applications.

Trust Wisdomshow to tailor the Offline X-Ray Inspection Machine to your specific requirements, delivering unparalleled performance and reliability in your inspection tools arsenal.

Support and Services:

Our Offline X-Ray Inspection Machine is supported by a dedicated team of technical experts committed to ensuring optimal performance and reliability. We provide comprehensive product technical support including installation guidance, operational training, maintenance advice, and troubleshooting assistance to help you maximize the efficiency of your inspection processes.

Our services include regular software updates to enhance system capabilities and ensure compatibility with the latest inspection standards. We also offer preventive maintenance programs designed to minimize downtime and extend the lifespan of your equipment. In addition, our technical support team is available to assist with calibration, system diagnostics, and repair services, ensuring that any issues are resolved promptly to keep your operations running smoothly. Customization and integration support are also available to tailor the machine's functionality to your specific application requirements.

By choosing our Offline X-Ray Inspection Machine, you benefit from a robust support infrastructure that prioritizes customer satisfaction and continuous improvement, helping you maintain high-quality inspection standards with confidence.

Packing and Shipping:

Product Packaging:

The Offline X-Ray Inspection Machine is carefully packaged to ensure safe delivery and protection against damage during transit. The machine is first wrapped in anti-static and shock-absorbent materials. It is then secured within a custom-designed wooden crate with internal foam padding to prevent movement. All sensitive components are labeled and protected separately. The packaging is sealed and reinforced to withstand handling and environmental factors.

Shipping:

Shipping of the Offline X-Ray Inspection Machine is carried out using reliable logistics providers with experience in handling sensitive electronic equipment. The product is shipped via air or sea freight depending on customer requirements and destination. Each shipment includes detailed documentation, including a packing list, user manual, and compliance certificates. Tracking information is provided to the customer to monitor the shipment status until delivery.

FAQ:

Q1: What is the brand and model number of the Offline X-Ray Inspection Machine?

A1: The Offline X-Ray Inspection Machine is branded Wisdomshow, and the model number is S7200.

Q2: Where is the Wisdomshow S7200 Offline X-Ray Inspection Machine manufactured?

A2: The Wisdomshow S7200 Offline X-Ray Inspection Machine is manufactured in Shenzhen, China.

Q3: What types of products can the Wisdomshow S7200 inspect?

A3: The Wisdomshow S7200 is designed to inspect a variety of products for internal defects, foreign objects, and quality control in industries such as food, pharmaceuticals, and electronics.

Q4: Is the Offline X-Ray Inspection Machine easy to operate for new users?

A4: Yes, the Wisdomshow S7200 features a user-friendly interface that allows operators to quickly learn and efficiently manage

inspection tasks.

Q5: What kind of safety features does the Wisdomshow S7200 include?

A5: The Wisdomshow S7200 is equipped with advanced safety measures to ensure minimal radiation exposure, including shielding and automatic shut-off functions.



Shenzhen Wisdomshow Technology Co.,Ltd



+86 18926538696



elysia.li@wdsbga.cn



bgaxraymachine.com

No.6,Haosi Western Industry,Shangjing Town,Bao'an District,Shenzhen,China