



## WDS1800 12000W Fully Automatic BGA Rework Station with Windows Based Software Control for Mini PCB Size 10x10mm

Our Product Introduction

for more products please visit us on [bgaxraymachine.com](http://bgaxraymachine.com)

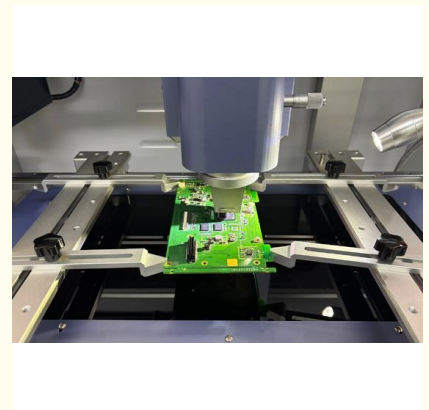
### Basic Information

- Place of Origin: CHINA
- Brand Name: WDS
- Model Number: WDS1800
- Minimum Order Quantity: 1
- Price: US \$59999-69999
- Packaging Details: Wooden Box



### Product Specification

- Bottom Heater Power: Max 8000W
- Upper Heater Power: Max 1200W
- Power: 12000W
- Power Supply: Ac380v  $\pm$ 10% 50/60hz
- Pcb Position Mode: V Type Card Slot+universal Fixture
- Weight: About 580KG
- Software Control: Windows Based
- Voltage: 220/110V
- Highlight: **12000W Power Fully Automatic BGA Rework Station**  
**Windows Based Software Control BGA Rework Station**  
**Mini PCB Size 10x10mm Automatic BGA Repair**



### More Images



**Product Description:**

The Fully Automatic BGA Rework Station is a state-of-the-art solution designed for precision and efficiency in the rework and repair of BGA (Ball Grid Array) components. Engineered with advanced technology, this machine is ideal for plant environments where high-volume and high-quality rework processes are essential. With a powerful 12000W total power capacity, the station ensures rapid heating and cooling cycles, significantly reducing downtime and increasing overall productivity.

One of the standout features of this BGA Rework Station is its fully automatic feeding device, which streamlines the process of handling components. This automation minimizes manual intervention, reducing the risk of errors and enhancing the consistency of every rework operation. The feeding device is designed to accommodate various sizes and types of BGA components, making it highly versatile and adaptable to different manufacturing requirements.

Equipped with an upper heater power of up to 1200W, the station provides precise and uniform heating to the targeted area. This high-power upper heater ensures that the BGA components reach the optimal reflow temperature quickly and evenly, which is critical for maintaining solder joint integrity and preventing damage to sensitive electronic parts. The precise temperature control capabilities of the station also help in minimizing thermal stress on the PCB and components.

Despite its powerful performance, the Fully Automatic BGA Rework Station boasts a robust build with a machine weight of approximately 580kg. This substantial weight contributes to the stability and durability of the equipment, ensuring reliable operation even in demanding industrial settings. The solid construction also helps in reducing vibrations during the rework process, which is crucial for achieving precise alignment and soldering quality.

Another notable feature of this BGA Rework Station is its large size touch screen interface, which enhances user interaction and operational control. The HD monitor integrated into the system provides clear and detailed visuals of the rework process, allowing operators to monitor every step with ease. The intuitive touch screen interface supports easy navigation through various settings and parameters, making it user-friendly even for operators with minimal training.

Designed specifically for plant use, this BGA Rework Station combines durability, precision, and automation to meet the rigorous demands of modern electronics manufacturing. Its combination of high power, automated feeding, advanced heating technology, and a sophisticated user interface makes it an indispensable tool for any facility focused on quality and efficiency. Whether used for repairing defective boards or reworking prototypes, this station delivers consistent and reliable results every time.

In summary, the Fully Automatic BGA Rework Station is a powerful, reliable, and user-friendly machine tailored for industrial applications. Its 12000W power capacity, 1200W upper heater power, and approximately 580kg machine weight ensure robust performance and stability. The fully automatic feeding device enhances operational efficiency, while the large size touch screen and HD monitor provide superior control and monitoring capabilities. For plants seeking to improve their BGA rework processes, this station represents a valuable investment that combines cutting-edge technology with practical functionality.

**Features:**

- Product Name: Fully Automatic BGA Rework Station
- Power Supply: AC 380V ±10%, 50/60Hz
- Mini PCB Size Compatibility: 10 x 10 mm
- Bottom Heater Power: Maximum 8000W for efficient heating
- Feeding Device: Fully Automatic for seamless operation
- Software Control: Windows-based interface for user-friendly control
- Equipped with an Industry Computer for robust and reliable processing
- Provides Accurate Temperature Control to ensure optimal rework quality
- Dual-layer Accurate Temperature Control system for enhanced precision

**Technical Parameters:**

Software Control	Windows Based
Vision Alignment	Automatic Alignment
Weight	About 580KG
Feeding Device	Fully Automatic
PCB Thickness	0.8mm - 8mm
Bottom Heater Power	Max 8000W
Upper Heater Power	Max 1200W
Voltage	220/110V
Mini PCB Size	10*10mm
Power	12000W

**Applications:**

The WDS Fully Automatic BGA Rework Station, model WDS1800, manufactured in China, is an essential tool designed for precision and efficiency in the electronics manufacturing industry. This advanced technology equipment is specifically engineered for the delicate and complex tasks involved in the repair and rework of Ball Grid Array (BGA) components on printed circuit boards (PCBs). With an

exceptional SMT precision of  $\pm 0.01\text{mm}$ , the WDS1800 ensures highly accurate alignment and placement, crucial for maintaining the integrity and functionality of modern electronic devices.

Ideal for manufacture environments, the WDS1800 is equipped with an automatic vision alignment system that significantly reduces human error and enhances operational speed. This feature allows technicians to achieve perfect component positioning with ease, making it suitable for high-volume production lines as well as specialized repair workshops. The station's bottom heater boasts a powerful maximum output of 8000W, providing uniform and efficient heating to prevent damage to sensitive components during the rework process.

The WDS1800 accommodates PCBs up to a maximum size of 640\*490mm, making it versatile for a wide range of applications, from small consumer electronics to larger industrial circuit boards. The PCB position mode utilizes a V type card slot combined with a universal fixture, ensuring secure and stable placement of the board throughout the rework procedure. This design enhances both safety and precision, reducing the risk of misalignment or damage.

In scenarios where advanced technology integration is paramount, such as in the manufacture of smartphones, computers, and other sophisticated electronic devices, the WDS Fully Automatic BGA Rework Station proves indispensable. It supports both the production and repair phases, facilitating efficient rework without compromising quality. Whether used in large-scale manufacturing plants or specialized service centers, the WDS1800 stands out for its reliability, precision, and user-friendly operation, making it a crucial asset for modern electronic manufacturing and repair workflows.

## Customization:

The WDS Fully Automatic BGA Rework Station, model WDS1800, is a high-performance soldering station designed and manufactured in CHINA. Featuring a robust upper heater power of up to 1200W, this advanced equipment ensures precise and efficient rework for various PCB thicknesses ranging from 0.8mm to 8mm.

Equipped with a fully automatic feeding device and X/Y/Z moveable mechanism, the WDS1800 offers unparalleled flexibility and accuracy during the soldering process. Its Windows-based software control system allows for intuitive operation and seamless integration into modern production lines.

This automatic soldering solution is ideal for professional electronics manufacturing environments seeking reliable and consistent results. With a weight of approximately 580KG, the WDS Fully Automatic BGA Rework Station combines stability with advanced functionality to meet demanding rework applications.

## Support and Services:

Our Fully Automatic BGA Rework Station is designed to provide precise and efficient repair solutions for Ball Grid Array components. It features advanced heating technology, intelligent temperature control, and automated alignment to ensure high-quality rework with minimal risk of damage to the PCB or components.

The station supports multiple reflow profiles and offers customizable settings to accommodate various BGA sizes and types, enhancing flexibility and compatibility with a wide range of applications. Its user-friendly interface simplifies operation, allowing technicians to program and monitor the rework process with ease.

We provide comprehensive technical support to assist you in setup, calibration, and troubleshooting. Our team is committed to helping you maximize the performance and reliability of your BGA rework station through detailed guidance and timely assistance.

Regular maintenance and software updates are recommended to keep the system running optimally. We also offer training services and detailed user manuals to ensure your team is well-equipped to utilize the full capabilities of the equipment.

For any technical inquiries or support needs, please refer to the documentation provided with your product or visit our online support resources for further information.

## Packing and Shipping:

### Product Packaging and Shipping for Fully Automatic BGA Rework Station

The Fully Automatic BGA Rework Station is carefully packaged to ensure it reaches you in perfect condition. Each unit is securely placed in a custom foam insert within a sturdy, double-walled cardboard box to protect against impacts during transit.

Inside the packaging, you will find the BGA Rework Station, all necessary accessories, a user manual, and a power cord, neatly organized to prevent movement and damage.

For added safety, the product is wrapped in anti-static material to protect sensitive electronic components from static electricity.

Shipping is available worldwide with multiple courier options to suit your needs. All shipments include tracking information and insurance for peace of mind.

We take great care in packaging and shipping to ensure that your Fully Automatic BGA Rework Station arrives promptly and in excellent condition, ready for immediate use.

## FAQ:

### Q1: What is the brand and model of this Fully Automatic BGA Rework Station?

A1: The Fully Automatic BGA Rework Station is manufactured by WDS and the model number is WDS1800.

### Q2: Where is the WDS1800 BGA Rework Station made?

A2: The WDS1800 is produced in China.

### Q3: What types of components can the WDS1800 BGA Rework Station handle?

A3: The WDS1800 is designed to handle a wide range of BGA, QFN, and other surface-mounted components for rework and repair.

### Q4: Is the WDS1800 easy to operate for beginners?

A4: Yes, the WDS1800 features a fully automatic system with an intuitive interface that makes it user-friendly, even for beginners.

### Q5: What are the main features of the WDS1800 Fully Automatic BGA Rework Station?

A5: Key features include precise temperature control, automatic component alignment, programmable heating profiles, and a high-quality infrared heating system.



+86 18926538696    elysia.li@wdsbga.cn    bgaxraymachine.com

No.6,Haosi Western Industry,Shangjing Town,Bao'an District,Shenzhen,China