



Offline X-Ray Inspection Machine with 0.01mm Mounting Accuracy 20fps Frame Rate and 45° Detector Tilt for Precise PCB Defect Analysis

Our Product Introduction

for more products please visit us on bgaxraymachine.com

Basic Information

- Place of Origin: China, Shenzhen
- Brand Name: Wisdomshow
- Model Number: S7200

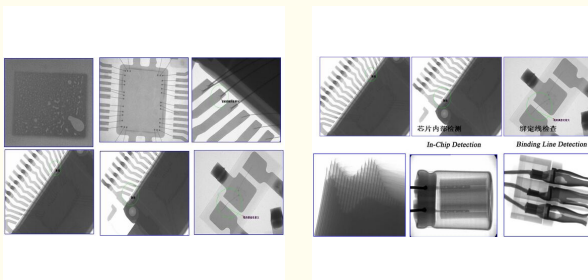


Product Specification

- User Interface: Touchscreen Control Panel
- Focus Size: 5 Um
- Tube Voltage: 90KV
- X-Ray Source: Micro-focus X-Ray Tube
- Loading Capacity: 10kg
- Tube Current: 10-200uA
- Detector Tilt: 45° Left/right
- Component Recognition: Automatic
- Highlight:
 - 0.01mm Mounting Accuracy Offline X-Ray Inspection Machine
 - 20fps Frame Rate BGA X Ray Inspection Machine
 - 45° Detector Tilt SMT X Ray Machine



More Images



Product Description:

The Offline X-Ray Inspection Machine is an advanced and reliable solution designed specifically for the inspection and quality assurance of electronic components on printed circuit boards (PCBs). This state-of-the-art machine is widely recognized in the electronics manufacturing industry, particularly as a BGA X Ray Inspection Machine and SMT X Ray Machine, providing unparalleled precision and efficiency in non-destructive testing processes. Equipped with cutting-edge technology, the Offline X-Ray Inspection Machine ensures that manufacturers can identify hidden defects and verify component placement with confidence.

One of the standout features of this Offline X-Ray Inspection Machine is its impressive frame rate capability. Operating at a frame rate of 1*1 20fps, the machine delivers high-speed image acquisition which significantly enhances inspection throughput without compromising image quality. This rapid frame rate is essential for modern electronics production lines where time efficiency and accuracy are paramount. The ability to process images swiftly helps reduce bottlenecks and ensures that production remains smooth and uninterrupted.

The user interface of the Offline X-Ray Inspection Machine is designed with operator convenience and ease of use in mind. It features an intuitive touchscreen control panel that simplifies the operation and monitoring of the machine. This touchscreen interface allows users to easily navigate through various settings and inspection modes, making it accessible even for operators with minimal technical background. The responsive control panel enhances user interaction, enabling quick adjustments and real-time visualization of inspection results.

Another key attribute of this machine is the detector tilt capability, which allows for a 45° left/right tilt. This unique functionality provides enhanced flexibility in capturing X-ray images from multiple angles, thereby improving the detection of defects that may be hidden in complex component assemblies. By tilting the detector, the machine can reveal critical details within solder joints, ball grid arrays (BGAs), and other SMT components that traditional inspection methods might miss. This feature significantly improves the overall accuracy and reliability of the inspection process.

The Offline X-Ray Inspection Machine is also equipped with advanced automatic component recognition technology. This feature leverages sophisticated algorithms to automatically identify and classify components on the PCB, streamlining the inspection workflow. Automatic component recognition reduces manual intervention, minimizes human error, and accelerates the inspection cycle. Manufacturers benefit from consistent and repeatable inspection results, which are crucial for maintaining high-quality standards in electronic assembly production.

Supporting all these hardware capabilities is powerful image processing software integrated into the Offline X-Ray Inspection Machine. This software is specially designed to enhance image clarity, contrast, and detail, enabling operators to detect even the smallest defects such as voids, cracks, misalignments, and insufficient soldering. The image processing software provides a comprehensive suite of tools for image analysis, measurement, and reporting, making it an indispensable part of the inspection system. Its user-friendly interface allows for easy customization and optimization of inspection parameters to meet specific production requirements.

At the core of the Offline X-Ray Inspection Machine is a robust Industrial X Ray Tube, which provides consistent and reliable X-ray generation essential for high-resolution imaging. The industrial-grade X-ray tube ensures stable performance over extended periods, reducing maintenance needs and downtime. It is engineered to deliver optimal X-ray intensity and penetration, making it suitable for inspecting a wide range of PCB assemblies regardless of complexity or density.

In conclusion, the Offline X-Ray Inspection Machine stands out as a premier BGA X Ray Inspection Machine and SMT X Ray Machine, combining high frame rates, an ergonomic touchscreen control panel, versatile detector tilt, automatic component recognition, and powerful image processing software. Its incorporation of a durable Industrial X Ray Tube ensures top-tier performance and longevity. This machine is an indispensable tool for electronics manufacturers striving to enhance product quality, reduce defects, and improve overall production efficiency through advanced X-ray inspection technology.

Features:

- Product Name: Offline X-Ray Inspection Machine
- Detector Tilt: 45° Left/Right for versatile inspection angles
- Focus Size: 5 µm for high precision imaging
- Tube Style: Closed for enhanced safety and durability
- Detector Resolution: 1536×1536 pixels ensuring clear and detailed images
- Mounting Accuracy: 0.01 mm for precise component alignment
- Ideal BGA X Ray Inspection Machine for detailed ball grid array analysis
- Reliable Inspection Tools integrated for comprehensive industrial X Ray machine applications

Technical Parameters:

Image Frame Rate	20fps
Radiation Safety	<1 µ SV/H
Mounting Accuracy	0.01mm
Component Recognition	Automatic
Focus Size	5 Um
Tube Style	Closed
Tube Current	10-200uA
User Interface	Touchscreen Control Panel
Tube Voltage	90KV

Frame Rate	1*1 20fps
------------	-----------

Applications:

The Wisdomshow S7200 Offline X-Ray Inspection Machine, originating from Shenzhen, China, is a highly advanced Industrial X Ray Machine designed to meet the rigorous demands of modern manufacturing and quality control processes. With its state-of-the-art Image Processing Software and a user-friendly Touchscreen Control Panel, the S7200 provides precise and efficient inspection capabilities across a wide range of applications.

This Electronics X Ray Machine is particularly ideal for inspecting complex electronic assemblies, including printed circuit boards (PCBs), solder joints, and embedded components. Its high tube voltage of 90KV ensures deep penetration and clear imaging, making it well-suited for detecting hidden defects such as voids, cracks, and misalignments within electronic components. The machine's Image Frame Rate of 20fps allows for real-time imaging, enabling rapid and accurate analysis without compromising detail.

One of the primary application scenarios for the Wisdomshow S7200 is as a BGA X Ray Inspection Machine. Ball Grid Array (BGA) components require meticulous inspection to ensure solder joint integrity, as these are critical points that directly affect the reliability of electronic devices. The S7200 excels in this area by providing high-resolution X-ray images that reveal soldering issues that are otherwise invisible to traditional optical inspection methods.

Beyond electronics, the S7200 is also widely used in industrial settings for quality assurance of various manufactured parts. Its radiation safety level of less than 1 μ SV/H ensures a safe operating environment for users, making it suitable for continuous use in production lines and research laboratories. The machine's offline functionality allows for flexible inspection setups, whether in a dedicated inspection room or integrated into a larger quality control system.

In summary, the Wisdomshow S7200 Offline X-Ray Inspection Machine is an indispensable tool for industries requiring meticulous internal inspection and defect analysis. Its combination of high tube voltage, advanced imaging software, and intuitive touchscreen control makes it an excellent choice for electronic manufacturers, industrial quality inspectors, and anyone needing reliable BGA X Ray Inspection Machine capabilities.

Support and Services:

Our Offline X-Ray Inspection Machine is designed to provide high-precision, non-destructive testing for a variety of applications. For technical support, our team offers comprehensive assistance including installation guidance, operational training, and troubleshooting to ensure optimal performance.

We provide regular software updates and maintenance services to keep your inspection machine running smoothly. Our experts can help customize inspection parameters and analyze inspection results to meet your specific quality control requirements.

In addition, we offer extended warranty options and on-site service packages to minimize downtime and enhance the longevity of your equipment. Our support services are aimed at maximizing your investment and ensuring reliable, accurate inspection outcomes.

For detailed user manuals, training materials, and FAQs, please refer to the product documentation provided with your machine or visit our online support portal.

Packing and Shipping:

Product Packaging:

The Offline X-Ray Inspection Machine is carefully packaged to ensure safe delivery and protection against damage during transit. The machine is securely placed in a custom-fitted foam insert within a sturdy, double-walled wooden crate. All sensitive components are wrapped with anti-static and shock-absorbent materials to prevent any impact or electrostatic discharge. The exterior of the packaging is clearly labeled with handling instructions, including "Fragile," "This Side Up," and "Keep Dry" to ensure proper care throughout shipping and handling.

Shipping:

Shipping of the Offline X-Ray Inspection Machine is conducted through reliable logistics partners experienced in handling delicate electronic equipment. The product can be shipped via sea freight, air freight, or road transport depending on customer requirements and destination. Prior to shipment, the machine undergoes a thorough inspection and testing to confirm full functionality. Tracking information is provided to the customer to monitor the shipment status. Upon arrival, it is recommended that the receiving party inspects the package for any visible damage before acceptance.

FAQ:

Q1: What is the brand and model of the Offline X-Ray Inspection Machine?

A1: The Offline X-Ray Inspection Machine is branded Wisdomshow, and the model number is S7200.

Q2: Where is the Wisdomshow S7200 Offline X-Ray Inspection Machine manufactured?

A2: The Wisdomshow S7200 is manufactured in Shenzhen, China.

Q3: What are the primary applications of the Wisdomshow S7200 Offline X-Ray Inspection Machine?

A3: The Wisdomshow S7200 is primarily used for non-destructive testing and inspection in industries such as electronics, automotive, and aerospace to detect internal defects and ensure product quality.

Q4: Does the Wisdomshow S7200 require an internet connection to operate?

A4: No, the Wisdomshow S7200 is an offline X-Ray inspection machine, meaning it operates independently without the need for an internet connection.

Q5: What kind of materials can the Wisdomshow S7200 Offline X-Ray Inspection Machine inspect?

A5: The Wisdomshow S7200 can inspect a variety of materials including metals, plastics, ceramics, and electronic components to identify internal faults or structural inconsistencies.



Shenzhen Wisdomshow Technology Co.,Ltd



+86 18926538696



elysia.li@wdsbga.cn



bgaxraymachine.com

