



# Offline X-Ray Inspection Machine with 5 μm Focus Size 10-200uA Tube Current and Closed Tube Style for Precision Control

Our Product Introduction

for more products please visit us on [bgaxraymachine.com](http://bgaxraymachine.com)

## Basic Information

- Place of Origin: China, Shenzhen
- Brand Name: Wisdomshow
- Model Number: S7200

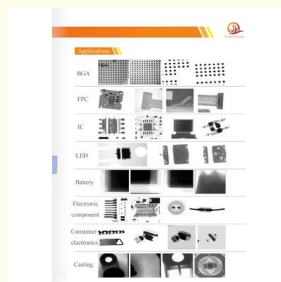
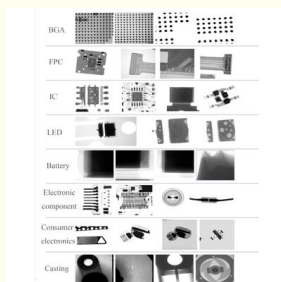


## Product Specification

- Image Frame Rate: 20fps
- Tube Current: 10-200uA
- Detector Resolution: 1536×1536 Pixel
- Loading Capacity: 10kg
- Detector Tilt: 45° Left/right
- Frame Rate: 1\*1 20fps
- Component Recognition: Automatic
- Mounting Accuracy: 0.01mm
- Highlight: **Offline X-Ray Inspection Machine with 5um focus**  
**, Closed tube X-Ray Inspection Machine ,**  
**X-Ray defect detection machine**



## More Images



### Product Description:

The Offline X-Ray Inspection Machine is an advanced and reliable solution designed to meet the rigorous demands of modern industrial and electronics inspection applications. Engineered with state-of-the-art technology, this machine offers exceptional performance, safety, and precision, making it an indispensable tool for quality control and defect analysis in various manufacturing environments. Whether you are inspecting printed circuit boards (PCBs), ball grid arrays (BGA), or other electronic components, this BGA X Ray Inspection Machine delivers outstanding results with ease and efficiency.

One of the defining features of this Electronics X Ray Machine is its commitment to radiation safety. The device operates with a radiation emission level of less than  $1 \mu\text{SV/H}$ , ensuring minimal exposure and maximum protection for operators and the surrounding environment. This low radiation output complies with stringent safety standards, providing peace of mind while maintaining high inspection accuracy. The machine's design incorporates advanced shielding and safety interlocks to further enhance operational safety without compromising inspection capabilities.

At the heart of the Offline X-Ray Inspection Machine is a robust Industrial X Ray Tube capable of operating at a tube voltage of 90KV. This voltage level is optimal for penetrating a wide range of materials and electronic assemblies, enabling detailed internal imaging that reveals hidden defects such as voids, cracks, misalignments, and solder joint issues. The tube current is adjustable between 10-200uA, allowing users to fine-tune the X-ray intensity based on the specific inspection requirements and sample characteristics. This flexibility ensures that every inspection is conducted with the ideal parameters for maximum image clarity and detail.

The machine boasts a generous loading capacity of 10kg, accommodating various sizes and types of components or assemblies. This capacity makes it suitable for inspecting everything from small electronic parts to larger industrial components, providing versatility and convenience in a single package. The sturdy and precise loading mechanism ensures secure placement and stable positioning of the samples during the inspection process, thereby enhancing the accuracy and repeatability of results.

In addition to its powerful hardware, the Offline X-Ray Inspection Machine features automatic component recognition technology. This intelligent system can identify and categorize different components within the scanned images, streamlining the inspection workflow and reducing the need for manual intervention. Automatic recognition facilitates quicker defect detection and analysis, improving overall productivity and reducing the likelihood of human error. This advanced feature is particularly beneficial in high-volume production environments where speed and accuracy are paramount.

Designed with user-friendliness in mind, the Electronics X Ray Machine offers an intuitive interface and comprehensive software tools that enable easy operation, image processing, and data management. Users can quickly adjust inspection parameters, view high-resolution images, and generate detailed reports to support quality assurance processes. The machine's compact offline configuration allows for flexible installation in various industrial settings without requiring constant network connectivity, making it an ideal choice for standalone inspection stations.

In summary, the Offline X-Ray Inspection Machine combines superior radiation safety, powerful Industrial X Ray Tube technology, versatile loading capacity, and intelligent automatic component recognition to deliver unparalleled inspection performance. Its tailored features and robust construction make it an excellent investment for manufacturers and quality control professionals seeking reliable and efficient BGA X Ray Inspection Machine capabilities. With this device, you can confidently ensure the integrity and reliability of your electronic assemblies and components, safeguarding your products and reputation in today's competitive market.

### Features:

Product Name: Offline X-Ray Inspection Machine

Image Frame Rate: 20fps for high-speed inspection

Tube Current: Adjustable from 10 to 200uA

Radiation Safety: Less than  $1 \mu\text{SV/H}$ , ensuring operator safety

Tube Style: Closed tube design for durability and maintenance ease

User Interface: Intuitive touchscreen control panel for easy operation

Ideal SMT X Ray Machine for precise inspection of electronic assemblies

Reliable Inspection Tools integrated for thorough defect detection

Robust Industrial X Ray Machine suitable for various industrial applications

### Technical Parameters:

Tube Current	10-200uA
X-Ray Source	Micro-focus X-Ray Tube
Loading Capacity	10kg
Software	Image Processing Software
Frame Rate	1*1 20fps
Component Recognition	Automatic
Radiation Safety	$<1 \mu\text{SV/H}$
User Interface	Touchscreen Control Panel
Detector Resolution	1536x1536 Pixel
Tube Voltage	90KV

## Applications:

The Wisdomshow S7200 Offline X-Ray Inspection Machine, originating from Shenzhen, China, is a cutting-edge solution designed to meet diverse inspection needs across various industries. This advanced Electronics X Ray Machine is engineered with precision and safety in mind, featuring a radiation safety level of less than 1  $\mu$  SV/H, ensuring a secure working environment for operators. Its state-of-the-art Industrial X Ray Tube technology allows for detailed internal inspections without damaging the components, making it an essential Inspection Tool for quality control and assurance.

The S7200 model is particularly suited for scenarios requiring meticulous examination of electronic components and assemblies. Its detector tilt capability of 45° left and right provides flexible imaging angles, enabling comprehensive analysis of complex structures. With a frame rate of 20fps at 1\*1 resolution, this machine captures clear and rapid images, facilitating efficient inspection workflows. The focus size of 5 micrometers allows for high-resolution imaging, which is crucial for identifying minute defects or irregularities within electronic devices.

In manufacturing environments, the Wisdomshow S7200 serves as an indispensable Inspection Tool for detecting solder joint defects, component misalignments, and internal cracks in printed circuit boards (PCBs). Its automatic component recognition feature streamlines the inspection process by quickly identifying and categorizing parts, reducing manual effort and increasing throughput. This makes the machine ideal for electronics manufacturers seeking to maintain high standards of product quality and reliability.

Beyond electronics, the Offline X-Ray Inspection Machine is valuable in research and development laboratories, repair centers, and quality assurance departments. It supports non-destructive testing of various materials and assemblies, including batteries, connectors, and mechanical parts. The combination of its Industrial X Ray Tube and advanced imaging capabilities ensures that users can detect hidden flaws that might compromise product performance or safety.

Overall, the Wisdomshow S7200 Offline X-Ray Inspection Machine stands out as a versatile and reliable Inspection Tool in the field of electronics and industrial inspection. Its blend of safety, precision, and automation makes it suitable for a wide range of occasions and scenarios where detailed internal inspection is critical. Whether in production lines, quality control labs, or maintenance facilities, this Electronics X Ray Machine offers unparalleled performance to meet the demanding needs of modern industry.

## Support and Services:

Our Offline X-Ray Inspection Machine is designed to provide precise and reliable non-destructive testing for a variety of materials and components. To ensure optimal performance and longevity of your equipment, we offer comprehensive technical support and services.

**Technical Support:**

Our team of experienced engineers and technicians is available to assist with installation, setup, and calibration of the X-Ray Inspection Machine. We provide guidance on operating procedures, troubleshooting, and maintenance to help you achieve accurate inspection results. Software updates and hardware diagnostics are also part of our ongoing support services.

**Maintenance Services:**

Regular maintenance is crucial to maintain the accuracy and safety of the X-Ray Inspection Machine. We offer scheduled preventive maintenance programs, including system checks, cleaning, and component replacements. Our maintenance services help minimize downtime and extend the lifespan of your equipment.

**Training:**

We provide comprehensive training sessions for operators and maintenance personnel to ensure proper use and care of the X-Ray Inspection Machine. Training covers system operation, safety protocols, image analysis, and basic troubleshooting techniques.

**Repair Services:**

In the event of equipment malfunction or damage, our authorized service centers offer prompt repair services using genuine replacement parts. We prioritize quick turnaround times to reduce disruption to your inspection processes.

**Customization and Upgrades:**

To meet specific inspection requirements, we offer customization options and system upgrades. This includes enhanced imaging software, improved hardware configurations, and integration with other inspection or production line systems.

**Customer Satisfaction:**

Our commitment is to provide reliable and efficient support to ensure your Offline X-Ray Inspection Machine operates at peak performance. We continuously strive to improve our services based on customer feedback and technological advancements.

## Packing and Shipping:

**Product Packaging:**

The Offline X-Ray Inspection Machine is carefully packaged to ensure safe delivery and optimal protection during transportation. The machine is first wrapped in anti-static foam and high-density protective materials to prevent any damage from shocks or vibrations. It is then placed inside a sturdy, custom-fitted wooden crate that is reinforced for heavy-duty handling. All delicate components and accessories are securely packed in separate compartments within the crate. The packaging is clearly labeled with handling instructions, including "Fragile," "This Side Up," and "Handle with Care" to ensure proper treatment throughout the shipping process.

**Shipping:**

We offer reliable shipping options for the Offline X-Ray Inspection Machine, including air freight and sea freight, depending on customer requirements and destination. Prior to shipping, the machine undergoes thorough inspection and testing to guarantee it is in perfect working condition. All necessary export documentation, including customs clearance papers and compliance certificates, are prepared and provided to facilitate smooth delivery. Upon shipment, customers receive tracking information to monitor the status of their order. Our logistics partners ensure timely and secure delivery to the specified location, with options for on-site installation and technical support available upon request.

## FAQ:

**Q1: What is the brand and model of the Offline X-Ray Inspection Machine?**

A1: The Offline X-Ray Inspection Machine is branded Wisdomshow, and the model number is S7200.

**Q2: Where is the Wisdomshow S7200 X-Ray Inspection Machine manufactured?**

A2: This machine is manufactured in Shenzhen, China.

**Q3: What are the primary applications of the Wisdomshow S7200 Offline X-Ray Inspection Machine?**

A3: The S7200 is primarily used for non-destructive testing and inspection in electronics, manufacturing, and quality control to detect defects and ensure product integrity.

**Q4: Does the Wisdomshow S7200 support offline operation?**

A4: Yes, the S7200 is designed for offline X-Ray inspection, allowing users to perform inspections without needing to be connected to a network or online system.

**Q5: What safety features are included in the Wisdomshow S7200 X-Ray Inspection Machine?**

A5: The S7200 includes multiple safety measures such as radiation shielding, interlock systems, and emergency stop functions to ensure

safe operation during use.



**Shenzhen Wisdomshow Technology Co.,Ltd**



+86 18926538696



elysia.li@wdsbga.cn



bgaxraymachine.com

No.6,Haosi Western Industry,Shangjing Town,Bao'an District,Shenzhen,China