



Fully Automatic BGA Rework Station with 12000W Power, ± 0.01 mm SMT Precision, and 580KG Weight for Accurate BGA Repair

Our Product Introduction

for more products please visit us on bgaxraymachine.com

Basic Information

- Place of Origin: CHINA
- Brand Name: WDS
- Model Number: WDS1800

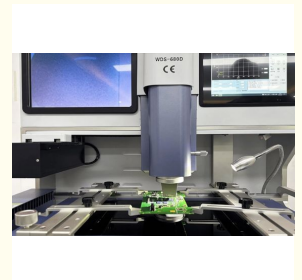
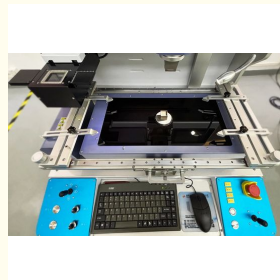
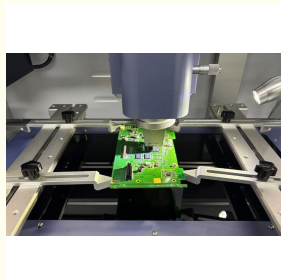


Product Specification

- Smt Precision: ± 0.01 mm
- Power: 12000W
- Weight: About 580KG
- Feeding Device: Fully Automatic
- Max Pcb Size: 640*490mm
- Power Supply: Ac380v $\pm 10\%$ 50/60hz
- Mini Pcb Size: 10*10mm
- Voltage: 220/110V
- Highlight: Fully Automatic BGA Rework Station 12000W, BGA Rework Station with Smt Precision, Automatic BGA Repair Station ± 0.01 mm



More Images



Product Description:

The Fully Automatic BGA Rework Station stands as a pinnacle of innovation and efficiency in the field of electronics manufacturing and repair. Designed for precision and reliability, this advanced soldering station is engineered to meet the rigorous demands of industry professionals who require consistent and high-quality results. With its robust construction and cutting-edge technology, it is ideally suited for handling complex tasks involving Ball Grid Array (BGA) components, making it an indispensable tool in modern electronic assembly and rework processes.

Weighing approximately 580 kilograms, this machine demonstrates a solid and stable build that ensures durability and longevity even under continuous industrial use. The substantial weight contributes to its stability during operation, reducing vibrations and enhancing the precision of the soldering process. The machine weight of 580kg reflects its heavy-duty design, which incorporates high-quality materials and components to withstand the challenges of intensive production environments.

One of the standout features of this Fully Automatic BGA Rework Station is its capability to handle mini PCB sizes as small as 10 by 10 millimeters. This versatility makes it highly effective for working with a wide range of PCB dimensions, from the tiniest circuit boards used in compact electronic devices to larger, more complex assemblies. The ability to rework such small PCBs with high accuracy significantly expands the range of applications for this soldering station, catering to diverse industry requirements.

The station is powered by an impressive 12,000 watts of total power, ensuring rapid heating and efficient energy use during the rework process. Integral to its operation is the bottom heater, which boasts a maximum power output of 8,000 watts. This powerful heating element provides uniform and consistent heat distribution from below the PCB, which is critical for preventing thermal stress and damage to sensitive components. Together, these power specifications guarantee quick preheating, controlled soldering, and precise temperature management essential for successful automatic soldering operations.

Designed with automation at its core, this rework station excels in delivering industry-grade performance that minimizes manual intervention. The automatic soldering capabilities streamline workflows, reduce the likelihood of human error, and improve overall efficiency in production lines. By incorporating intelligent control systems and programmable parameters, the machine allows operators to set precise temperature profiles and soldering sequences, ensuring repeatable and reliable outcomes with every use.

In industries where quality and consistency are paramount, the Fully Automatic BGA Rework Station meets and exceeds expectations by providing a professional-grade solution for soldering and rework tasks. Whether used in electronics manufacturing, repair centers, or research and development labs, this station enhances productivity while maintaining the highest standards of workmanship. Its advanced features and robust design make it an essential investment for organizations aiming to uphold excellence in electronic assembly and rework.

In summary, this Fully Automatic BGA Rework Station combines substantial machine weight and power with the ability to handle miniature PCBs, delivering superior heating performance and automated soldering precision. It represents a significant advancement in soldering technology, offering a comprehensive solution that supports the evolving needs of the electronics industry. For professionals seeking a reliable, efficient, and industry-grade soldering station, this product offers an unmatched blend of power, automation, and versatility.

Features:

Product Name: Fully Automatic BGA Rework Station

X/Y/Z moveable system for precise positioning

Supports PCB thickness from 0.8mm to 8mm

High power: 12000W for efficient heating

Windows based software control for user-friendly operation

SMT precision of ±0.01mm ensures accurate soldering

Compatible with mini PCB size as small as 10*10mm

Full automatic soldering station for enhanced productivity

Technical Parameters:

| | |
|---------------------|--------------------------------------|
| Pcb Position Mode | V Type Card Slot + Universal Fixture |
| Max Pcb Size | 640*490mm |
| Upper Heater Power | Max 1200W |
| Smt Precision | ±0.01mm |
| Feeding Device | Fully Automatic |
| Vision Alignment | Automatic Alignment |
| Bottom Heater Power | Max 8000W |
| Software Control | Windows Based |
| Voltage | 220/110V |
| Mini Pcb Size | 10*10mm |

Applications:

The WDS1800 Fully Automatic BGA Rework Station, manufactured by WDS in China, is a state-of-the-art solution designed for precision

and efficiency in electronic repair and manufacturing environments. This advanced soldering station is ideal for large BGA rework applications, providing superior performance with its powerful upper heater capable of reaching a maximum of 1200W. The high power output ensures rapid and even heating, which is critical for handling complex and densely packed circuit boards.

One of the standout features of the WDS1800 is its exceptional SMT precision of ± 0.01 mm, enabling technicians to perform intricate rework tasks with unparalleled accuracy. This precision is further enhanced by the station's automatic vision alignment system, which ensures that components are perfectly positioned before soldering, minimizing errors and improving the overall quality of repairs. The fully automatic feeding device streamlines the workflow, reducing manual intervention and increasing productivity, making it an indispensable tool for high-volume reballing and rework operations.

Weighing 580kg, the robust build of the WDS1800 guarantees stability during operation, which is crucial when dealing with delicate components and complex soldering procedures. This reballing machine is perfectly suited for electronics manufacturing plants, repair centers, and R&D laboratories where high precision and reliability are non-negotiable. It excels in scenarios involving the repair and refurbishment of large BGA chips, such as those found in smartphones, tablets, gaming consoles, and advanced computing devices. The WDS1800 Fully Automatic BGA Rework Station is also ideal for training centers and educational institutions that focus on advanced electronics assembly and repair techniques. Its combination of large BGA rework capabilities, automatic alignment, and fully automatic feeding makes it a comprehensive solution that enhances both learning and hands-on application.

In summary, the WDS brand's WDS1800 model is a powerful, precise, and fully automated soldering station designed to meet the rigorous demands of modern electronics rework. Its features make it highly suitable for a wide range of application occasions and scenarios, from high-volume manufacturing to specialized repair services, ensuring consistent and reliable results every time.

Support and Services:

Our Fully Automatic BGA Rework Station is designed to provide precise and reliable soldering and desoldering of Ball Grid Array components. For technical support, we offer comprehensive troubleshooting guides, detailed user manuals, and firmware updates to ensure optimal performance.

We provide professional maintenance services including calibration, part replacement, and system diagnostics to keep your rework station operating at peak efficiency. Our trained technicians are available to assist with setup, operation training, and advanced repair services.

Additionally, we offer extended warranty plans and on-site support options tailored to your specific needs. Whether you require routine maintenance or emergency repair, our dedicated support team is committed to minimizing downtime and maximizing productivity.

For detailed service requests and technical inquiries, please refer to our online resources or contact your local authorized service center. We strive to deliver prompt and effective solutions to support your BGA rework applications.

Packing and Shipping:

Product Packaging:

The Fully Automatic BGA Rework Station is securely packaged in a sturdy, impact-resistant carton to ensure safe delivery. Inside, the unit is cushioned with high-density foam inserts to protect delicate components during transit. All accessories, including nozzles, power cables, and user manuals, are neatly organized and packed within the box. The packaging is designed to prevent movement and minimize the risk of damage.

Shipping:

We offer worldwide shipping with various courier options to meet your needs. The Fully Automatic BGA Rework Station is shipped via reliable carriers with tracking information provided for each order. Shipping times vary depending on the destination but typically range from 3 to 10 business days. Each package is carefully inspected before dispatch to ensure it meets quality standards and arrives in excellent condition.

FAQ:

Q1: What is the brand and model of this Fully Automatic BGA Rework Station?

A1: The Fully Automatic BGA Rework Station is branded WDS, and the model number is WDS1800.

Q2: Where is the WDS1800 BGA Rework Station manufactured?

A2: The WDS1800 BGA Rework Station is made in China.

Q3: What types of components can the WDS1800 handle?

A3: The WDS1800 is designed to handle BGA, QFP, and other surface mount devices for precise rework and repair.

Q4: Is the WDS1800 easy to operate for beginners?

A4: Yes, the WDS1800 features a fully automatic system with user-friendly controls, making it suitable for both professionals and beginners.

Q5: What kind of heating technology does the WDS1800 use?

A5: The WDS1800 uses advanced infrared and hot air heating technology to ensure uniform and efficient soldering and desoldering.



Shenzhen Wisdomshow Technology Co.,Ltd



+86 18926538696



elysia.li@wdsbga.cn



bgaxraymachine.com

No.6,Haosi Western Industry,Shangjing Town,Bao'an District,Shenzhen,China